

1. TECHNICAL SPECIFICATIONS

Protection index: IP20
Up to 15 remotes can be assigned to each motor.

Received frequency: 433.92MHz
Charging: USB-C 5 volts

Code: Rolling
Charge time: 6 hours

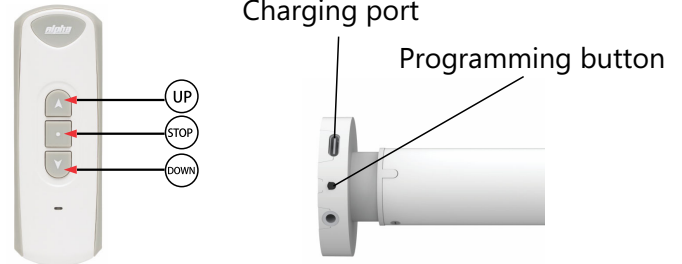
2. CHARGING AND WAKING UP MOTOR

! Charge the motor using the USB-C charger before operation. The motor won't function until it has been charged.

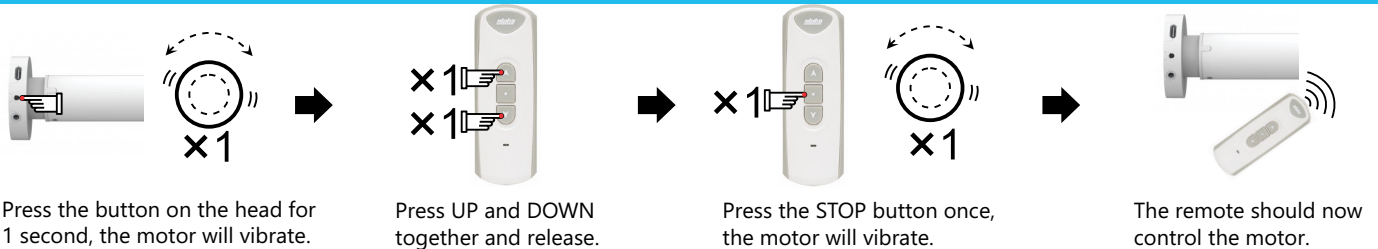
Waking the motor up for the first time:

Method A Plug USB-C charger into charging port for a few seconds till motor vibrates.

Method B Press the motor button 5 times, motor will vibrate.



3. CODE LEARNING / PAIR REMOTE TO MOTOR



If you are struggling to connect the remote to the motor with the above instructions. Please try the following:

1. Press and hold the button in on the motor head for 12 seconds and then release.
2. Wait 20 seconds and then short press the button on the motor 5 times. Motor will jiggle.
3. Press Motors button once, motor will jiggle. Now pair the remote UP & DOWN together, then STOP button once.

4. CHANGING THE RUNNING DIRECTION

Method A.



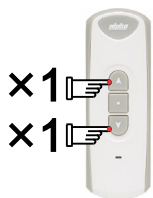
Long press for 5 seconds

Press motorhead's button for about 5 seconds until the motor vibrates.



The motor's running direction is reversed.

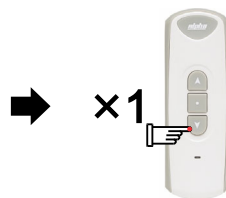
Method B.



Press UP and DOWN buttons simultaneously.



Press the STOP button 6 times within 10s.



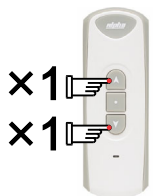
Press the DOWN button once within 10s, the motor will vibrate.



The motor's running direction is reversed.

5. TURN ON STEP BY STEP FUNCTION The motor will move in small increments unless the button is held down.

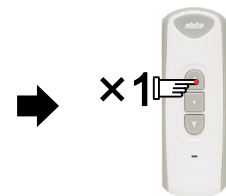
Note: If the motor is in step-by-step mode, pressing the UP or DOWN button for 3s will make the motor will run continuously.



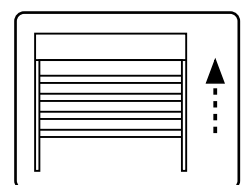
Press UP and DOWN buttons simultaneously.



Press the STOP button once within 10s.



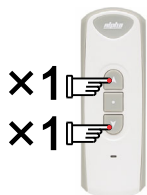
Press the UP button once within 10s, the motor will vibrate.



The motor will run step by step.

6. TURN OFF STEP BY STEP FUNCTION The motor will operate normally.

Note: If the motor is in step-by-step mode, pressing the UP or DOWN button for 3s will make the motor will run continuously.



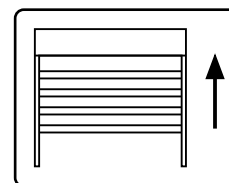
Press UP and DOWN buttons simultaneously.



Press the STOP button once within 10s.



Press the DOWN button once within 10s, the motor will vibrate.

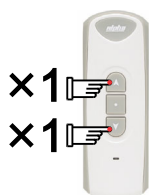


The motor will run continuously.

7. TOP LIMIT SETTING

First, move the blind to the desired position.

First, move the blind to the desired position.



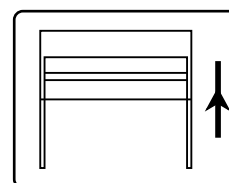
Press UP and DOWN buttons simultaneously.



Press the STOP button 2 times within 10s.



Press the UP button once within 10s, the motor will vibrate.

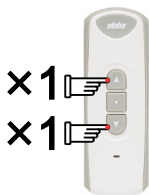


The TOP limit is set

8. BOTTOM LIMIT SETTING

First, move the blind to the desired position.

First, move the blind to the desired position.



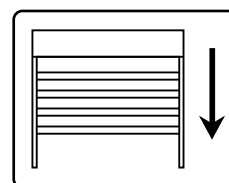
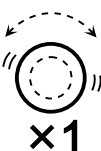
Press UP and DOWN buttons simultaneously.



Press the STOP button 2 times within 10s.



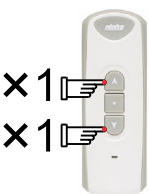
Press the DOWN button once within 10s, the motor will vibrate.



The BOTTOM limit is set

9. TOP LIMIT DELETING

First, move the blind to the desired position.



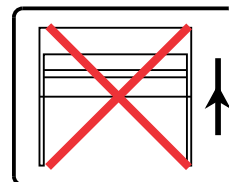
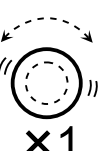
Press UP and DOWN buttons simultaneously.



Press the STOP button 4 times within 10s.



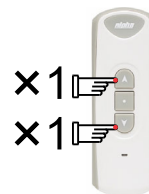
Press the UP button once within 10s, the motor will vibrate.



The top limit is deleted.

10. BOTTOM LIMIT DELETING

First, move the blind to the desired position.



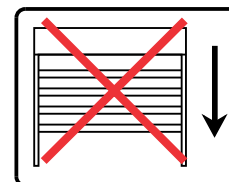
Press UP and DOWN buttons simultaneously.



Press the STOP button 4 times within 10s.



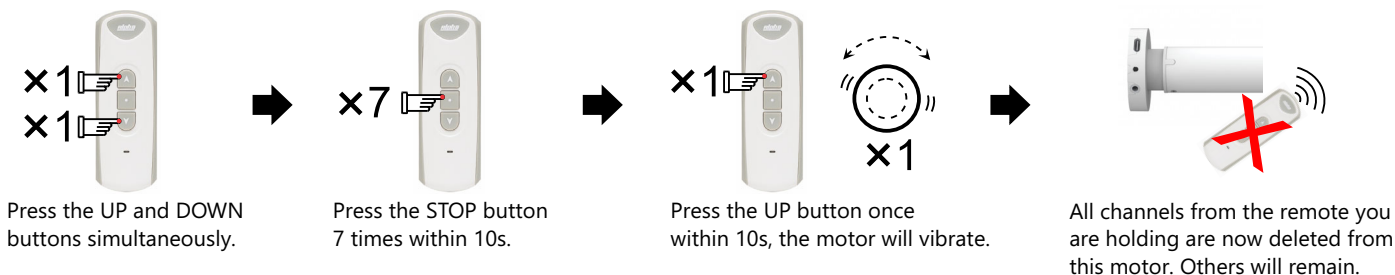
Press the DOWN button once within 10s, the motor will vibrate.



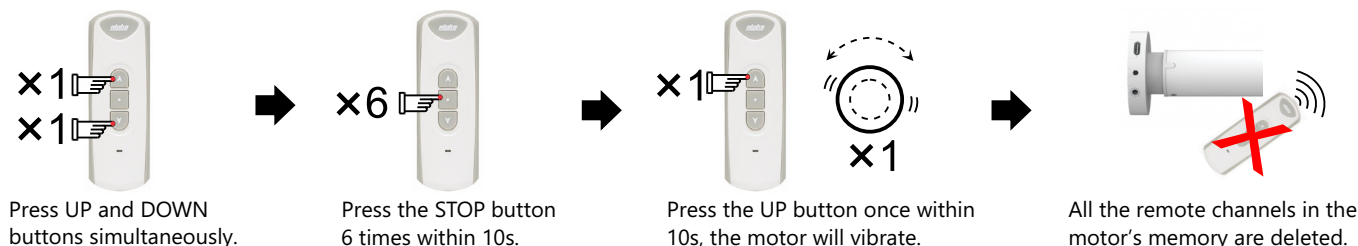
The bottom limit is deleted.

11. CODE DELETING

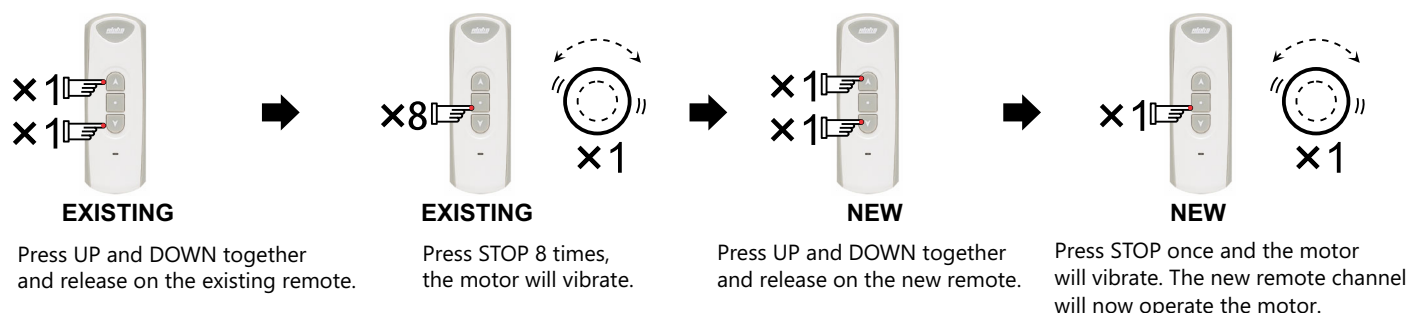
Method A: This method deletes all channels from the remote you are holding from the motor.



Method B: This method deletes all channels from all remotes from the motor's memory.



12. ASSIGNING AN ADDITIONAL REMOTE



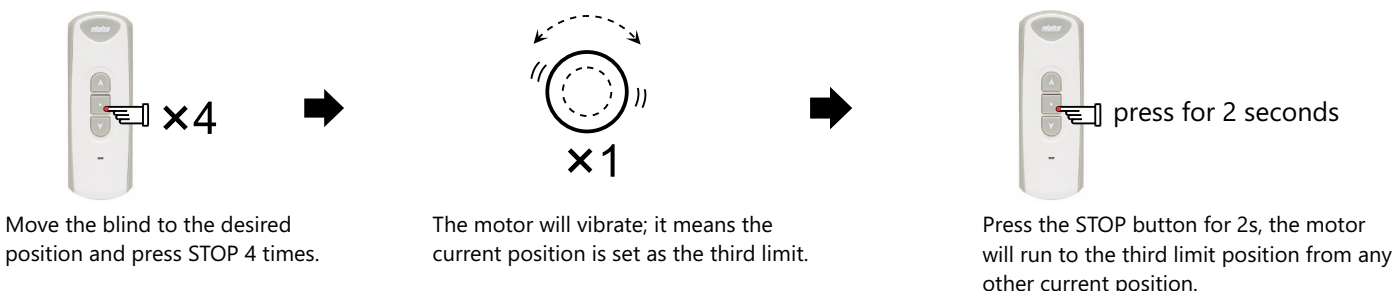
13. THE THIRD LIMIT

First, move the blind to the desired position.

First, move the blind to the desired position.

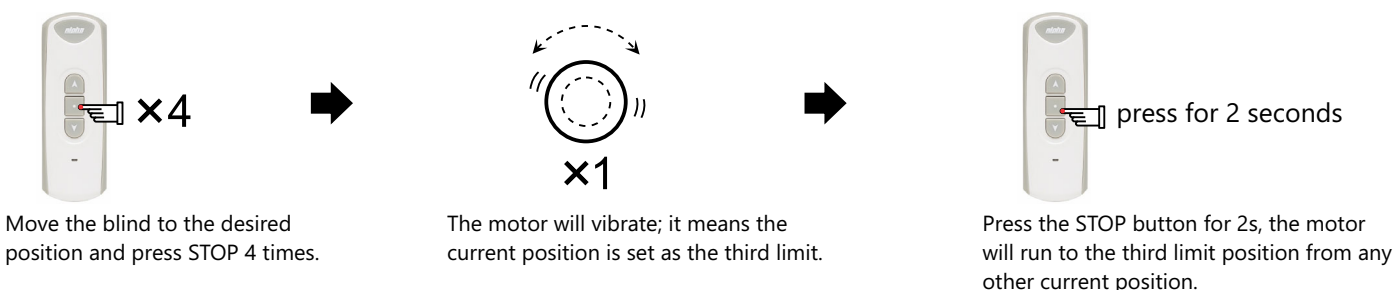
A. Set the Third Limit

Note: The third limit is also named as the intermediate limit, it is available at any position between up and down limit. The third limit will be deleted automatically if the up or down limit is deleted.



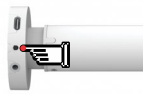
B. Reset the Third Limit

The third limit will be deleted automatically if the up or down limit is deleted.



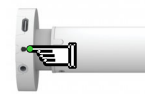
14. THE LIGHT INDICATOR

(1) Recharging Light Indicator



Red light

(1) When the battery is recharging, the red light is on.



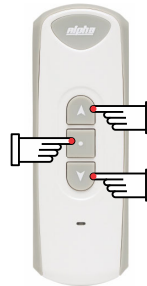
Green Light

(2) When the battery is fully charged, the light will turn green.

Note: During motor charging, if red and green lights are both on, it means the charging source is under powered, please change the charging source.

(2) Low battery light indicator on motor

1) When battery voltage is too low, press any button on the remote, motor will vibrate once and the red light on the motor will flash and motor will stop running, this situation lasts 10 times, please recharge now.



Red light flashing

2) If the motor is not charged, the motor won't vibrate and only the red light will flash, the battery needs to be charged immediately.

15. SLEEP MODE

Put motor into "sleep mode". This function reboots the motor if you cannot assign a remote to the motor for the first time. Press motor head button once, motor vibrates.

Press motor head (programming) button 5 times, red light illuminates with each press and then turns green.



At Alpha Tubular Motors, your safety and the effective operation of our tubular motors with lithium-ion batteries are our top priorities. We kindly ask you to follow these important safety guidelines:

Avoid Overcharging

Please disconnect the motor from the charger as soon as the green light indicates a full charge. Overcharging can lead to overheating and may pose a fire risk.

Prevent Overheating

To help prevent overheating, ensure the motor is not exposed to high temperatures or direct sunlight for extended periods.

Immediate Action

If you notice any unusual warmth, discolouration, or odours coming from the motor, please disconnect it from the power source and stop using it right away.

Proper Storage

Store the motor in a cool, dry place, away from flammable materials. For best results, keep it within a temperature range of -20°C to 65°C

Use Approved Chargers

Always use the charger that comes with the motor or an approved replacement. Using incompatible chargers can create safety hazards.

Disposal

Please dispose of lithium-ion batteries according to local regulations. Avoid incinerating or submerging them in water, as this can lead to dangerous reactions.

Additional Notes

To keep your motor in top shape, charge it every six months.

For safety, please ensure that children do not play with the remote or motor.

Liability Disclaimer

While we at Alpha Tubular Motors strive to provide safe and reliable products, we cannot accept liability for any damage or personal injury resulting from improper use, charging, storage, or handling of our motors or their lithium-ion batteries. By using our products, you acknowledge that you have read, understood, and agree to follow these safety guidelines.