

2024

PRODUCT
CATALOGUE
Issue 9



alpha

TUBULAR MOTORS PTY LTD

MOTORISATION MADE EASY

Motorisation

Tubular Motors

WSER Remote Control Motors	p 4-9
DC Motor Systems	p 6-7
WSEC Automation System Motors	p 12
WSS Mechanical Limits Motors	p 14-16
Manual Override Motors	p 17-18
WSEB 60mm Motor	p 19

Curtain System

Curtain Motors	p 22-23
Curtain Accessories	p 24-25
Extendable Curtain Track	p 26
Vertical Curtain Track	p 27-28



made easy

Control Systems

Alpha-Neo App & Link Box	p 29
Remote Controls	p 30-32
Wall Mount Remote Controls	p 33
Receivers	p 34
Relay Controlled Remote	p 35

Sun & Wind Sensors

Motion Sensor	p 36
Sun and Wind Sensors	p 37

Accessories

Crown and Drive Adapters	p 39-48
Brackets	p 49-50
Limit Setting Device & Test Lead	p 51
Cables	p 52
Manual Override	p 52
Cassette Awning & Folding Arm	
Motor Guide	p 53
Motor Lifting Capacity Chart	p 54



WSER40

5/28
10/14

7 year replacement warranty
Electronic limit switch
Built-in receiver
Wireless limit setting
3 core motor

This is a true one motor for all blinds, internal motor.

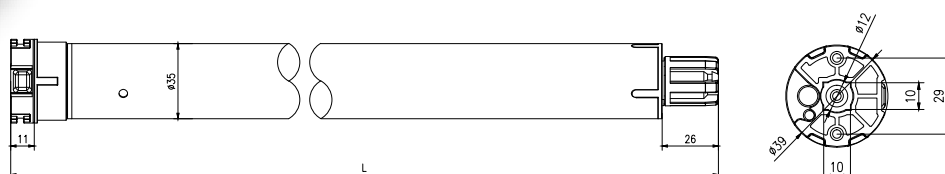
The WSER40 5/28 is able to lift 6m wide x 2.5m drop with 2 links.

It's reliable and delivers smooth quiet operation.



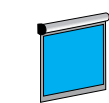
Electronic Limit Switch

Built in Receiver Motor
35mm diameter

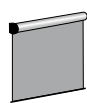


Specifications - 240V / 50Hz

Type	5/28	10/14
Rated Torque (N.m)	5	10
Output Speed (rpm)	28	14
Nominal Consumption (W)	116	116
Nominal Voltage (V)	240	240
Nominal Current (A)	0.49	0.49
Running Time (Min)	4	4
Protection Index (IP)	44	44
Total Length (mm)	560	560
Maximum Turns (Turn)	∞	∞
Net Weight (Kg)	1.34	1.35



Projection Screen



Roller Blind

Product Certificates



Our WSER50 series Universal motors are the most popular external straight drop motors in Australia.

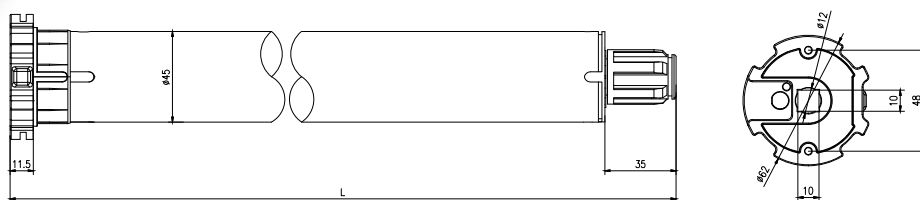
Due to the torque stop function, this motor is ideal for all external straight drop systems. This protective feature can be used to stop on stoppers at the top limit in side channel systems, and can also be used to tension the fabric when the awning is down. A top limit is set normally and the torque stop function can be used in conjunction. Suitable for use with RS001 and RS002, Sun/Wind sensors.

When used with Sun/Wind sensors, this motor detects a pulse from the sensor issued every 20 minutes. If the Awning is down and does not receive a signal from the sensor for half an hour, it will rise automatically as a protective measure assuming the sensor has failed.

The 30/17 version of this motor is available both with and without Molex connectors. The 50/13 version is only available with Molex connector.

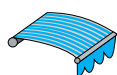
Electronic Limit Switch

Built in Receiver Motor
45mm diameter



Specifications - 240V / 50Hz

Type	10/27	30/17	50/13
Rated Torque (N.m)	10	30	50
Output Speed (rpm)	27	17	13
Nominal Consumption (W)	203	226	244
Nominal Voltage (V)	240	240	240
Nominal Current (A)	0.84	0.95	1.06
Running Time (Min)	4	4	4
Protection Index (IP)	44	44	44
Total Length (mm)	570	570	600
Maximum Turns (Turn)	∞	∞	∞
Net Weight (Kg)	2.30	2.45	2.65



Awning



Straight Drop



Roller Shutter



External Zip System

Product Certificates



WSER50 G 20/17 Grey Universal

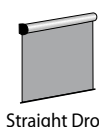
5 year replacement warranty
Electronic limit switch
Built-in receiver
Wireless limit setting
3 core motor

The WSER50 G 20/17 Grey Universal is a 20Nm economy motor. This motor is ideal for all external straight drop and zip systems and has all the functions of the larger 30Nm and 50Nm Universal motors, including the upwards torque stop function. This protective feature can be used to stop the awning on stoppers at the top limit in side channel systems, and can also be used to tension the fabric when the awning is down. A top limit is set normally, and the torque stop function can be used in conjunction. Suitable for use with RS001 and RS002, Sun/Wind sensors. When used with Sun/Wind sensors, this motor detects a pulse from the sensor issued every 20 minutes. If the Awning is down and does not receive a test signal from the sensor for half an hour, it will rise automatically as a protective measure assuming the sensor has failed. This motor can also be installed in roller shutters where 20Nm is sufficient to lift the shutter.



Electronic Limit Switch

Built in Receiver Motor
45mm diameter



Straight Drop



Roller Shutter



External Zip System

Product Certificates



Specifications - 240V / 50Hz

Type	20/17
Rated Torque (N.m)	20
Output Speed (rpm)	17
Nominal Consumption (W)	203
Nominal Voltage (V)	240
Nominal Current (A)	0.84
Running Time (Min)	4
Protection Index (IP)	44
Total Length (mm)	570
Maximum Turns (Turn)	∞
Net Weight (Kg)	1.92

WSER50

30/17 Cassette Awning
50/13 Cassette Awning

7 year replacement warranty
Electronic limit switch
Built-in receiver
Wireless limit setting
3 core motor

These motors are designed to automatically set their inner limit based on tension. It will also allow you to set the inner limit manually if you require.

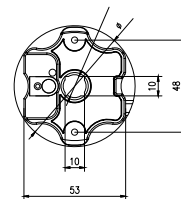
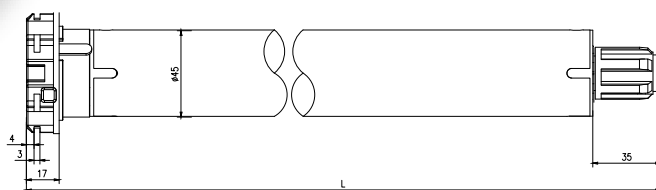
When using the auto inner limit setting, the outer limit is set manually using the remote and it will find its own inner stopping position by detecting the resistance as it reaches the fully closed position the first time it is closed. After this the motor will stop in this position after detecting an increased resistance of 25% while moving.

On larger cassette awnings, 25% is sometimes not enough so you can increase this to 50%, 75% or 100% if required. It's rare to need this adjustment but it's a good feature to have.

When used with Sun/Wind sensors or Motion sensors, this motor detects a pulse from the sensor issued every 20 minutes. If the Awning is out and does not receive a signal from the sensor for half an hour, it will close itself automatically as a protective measure assuming the sensor has failed or the batteries are flat.

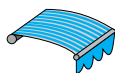
Electronic Limit Switch

Built in Receiver Motor
45mm diameter



Specifications - 240V / 50Hz

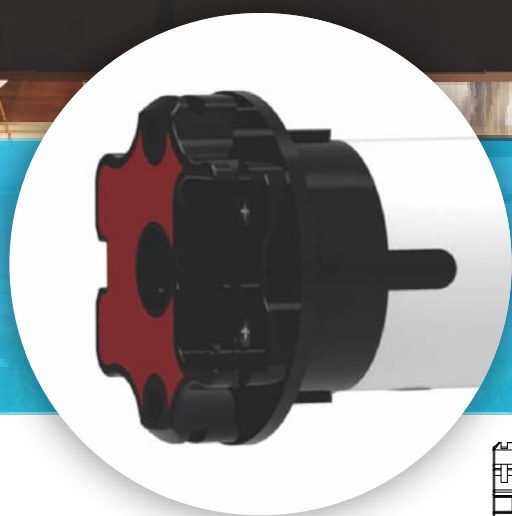
Type	30/17	50/13
Rated Torque (N.m)	30	50
Output Speed (rpm)	17	13
Nominal Consumption (W)	226	244
Nominal Voltage (V)	240	240
Nominal Current (A)	0.95	1.06
Running Time (Min)	4	4
Protection Index (IP)	44	44
Total Length (mm)	570	600
Maximum Turns (Turn)	∞	∞
Net Weight (Kg)	2.45	2.65



Awning

Product Certificates

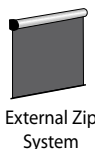
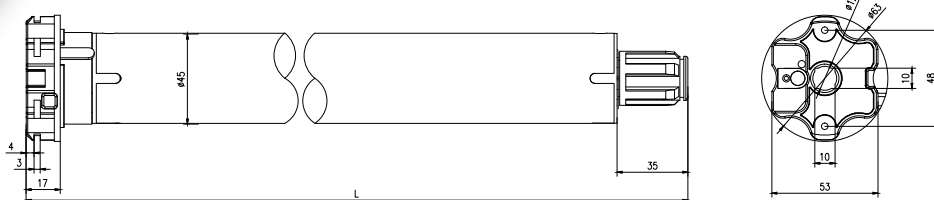




Designed primarily with Zip style systems in mind, this motor incorporates obstacle detection on the way down and torque stop on the way up. It can stop on stoppers at the top limit if necessary on the way up, but also, if on the way down, the motor detects that the bottom bar has stopped moving in the channel due to getting stuck or hitting an object, it will rebound to a higher point and attempt to go down again. After attempting this 3 times unsuccessfully, if it has detected an obstacle, it will return to the rebound position and stop. But if it has detected wind stopping the awning, then it will return to the top limit.

This motor has a star shaped head which is different to all other Alpha motor heads, and will suit many common mountings used by various manufacturers when producing their product.

Built-in Receiver Motor
45mm diameter



For compatible
mounting brackets,
please see the
A3438, A3439 and A3440
on page 49

Specifications - 240V / 50Hz

Type	30/17
Rated Torque (N.m)	30
Output Speed (rpm)	17
Nominal Consumption (W)	226
Nominal Voltage (V)	240
Nominal Current (A)	0.95
Running Time (Min)	4
Protection Index (IP)	44
Total Length (mm)	570
Maximum Turns (Turn)	∞
Net Weight (Kg)	2.45

Product Certificates



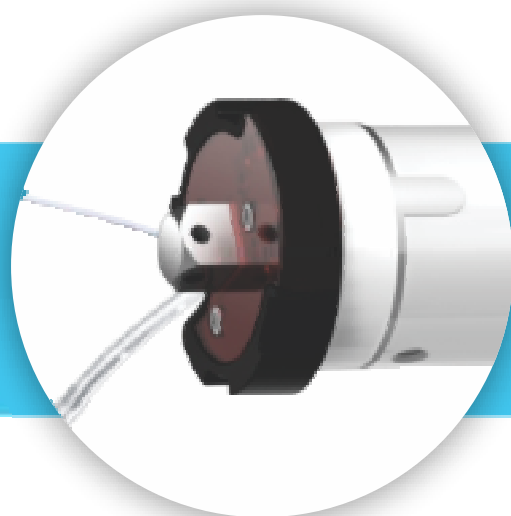
WSER60 100/12 Universal

7 year replacement warranty
Electronic limit switch
Built-in receiver
Wireless limit setting
3 core motor

This motor is the super heavy duty version in the WSER family.

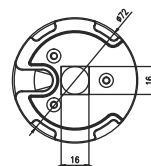
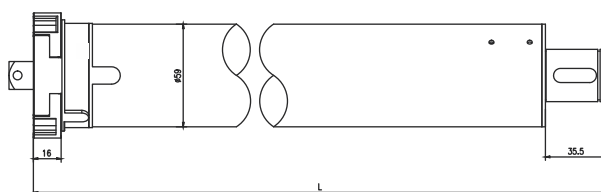
Although it's a universal motor, it's compatible with extra-large folding arms including the additional safety features provided by motion and wind sensors.

Due to the larger diameter of this motor, the smallest tube it can be used with is a 78mm Gal round tube with keyway, or 70mm octagonal roller shutter tube.



Electronic Limit Switch

Built in Receiver Motor
60mm diameter



Awning

Product Certificates



Specifications - 240V / 50Hz

Type	100/12
Rated Torque (N.m)	100
Output Speed (rpm)	12
Nominal Consumption (W)	370
Nominal Voltage (V)	240
Nominal Current (A)	1.60
Running Time (Min)	4
Protection Index (IP)	44
Total Length (mm)	685
Maximum Turns (Turn)	∞
Net Weight (Kg)	5.06

WSERD30-B

battery motor

10

1/30C
2/31
3/20

Electronic limit switch
Built-in receiver

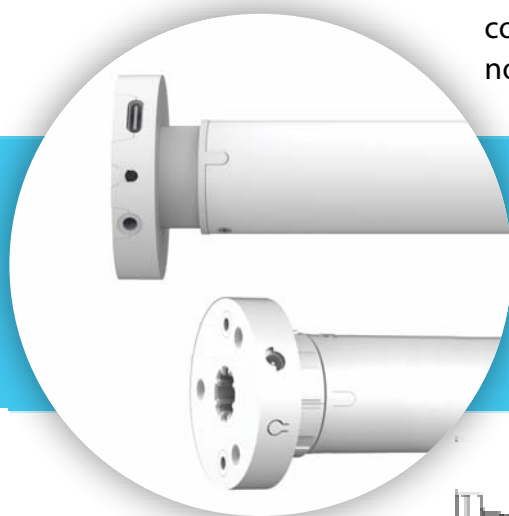
This version of our popular internal lithium rechargeable battery motor has a new groundbreaking coreless DC drive inside, which is much more efficient and much quieter than other battery motors. These motors are available in three torque ratings, 1Nm, 2Nm and 3Nm.

The WSERD30-B 1/30C (1Nm) version of this motor can lift a blind up to 2m high x 2m wide. This 1Nm motor has a USB-C charging port and uses an ALDC 5V-C charger.

The WSERD30-B 2/31 (2Nm) motor can lift a blind 3m high x 3m wide. This 2Nm motor uses an ALDC 16.8V DC charger.

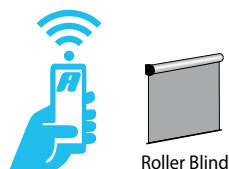
The WSERD30-B 3/20 (3Nm) version of this motor will lift a blind 4m high x 3m wide. This 3Nm motor uses an ALDC 16.8V DC charger.

The fittings for these motors will allow it to be used with a range of tube sizes from 30-50mm in diameter. All of the charging intelligence is taken care of inside the motor, not by a 3rd party charger. This eliminates many of the issues experienced by other brands of DC motors. The motor will indicate both when charging is required, and completed. The charger plugs directly into the motor head so there is no need for an unsightly charging cable.



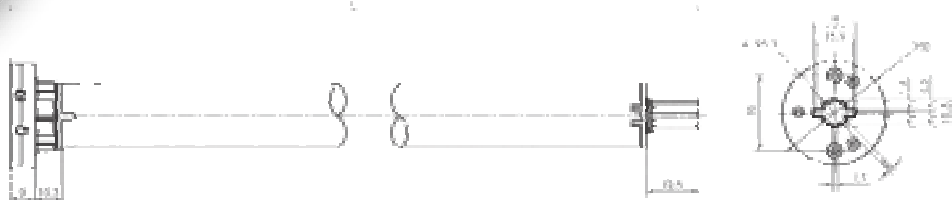
- * Charger comes with 3m cable.
- * 3m extension cable also available.
- * 2Nm & 3Nm motor comes with 20cm charging tail for optional use, in case the motor head is difficult to access after installation.
- * 1Nm 20cm charging tail optional.

- Short motor
- 5 volt USB-C charging
- Ultra quiet operation
- Adjustable speed
- Patented coreless technology
- No aerials
- NEO app control



Roller Blind

Product Certificates

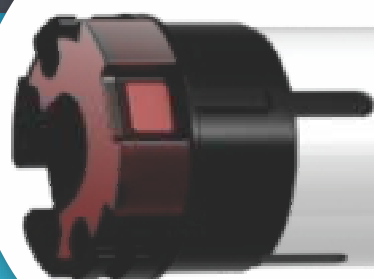


Specifications - DC

Type	1/30	2/31	3/20
Rated Torque (N.m)	1	2	3
Output Speed (rpm)	30	31	20
ALDC Charger Required	5V-C	16.8V	16.8V
Nominal Voltage (V)	7.4	11.1	12
Speed Adjustable	no	no	no
Running Time (Min)	∞	∞	∞
Protection Index (IP)	20	20	20
Total Length (mm)	460	507	507
Maximum Turns (Turn)	∞	∞	∞
Net Weight (Kg)	0.48	0.54	0.54

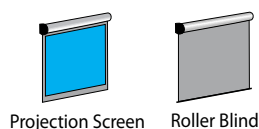
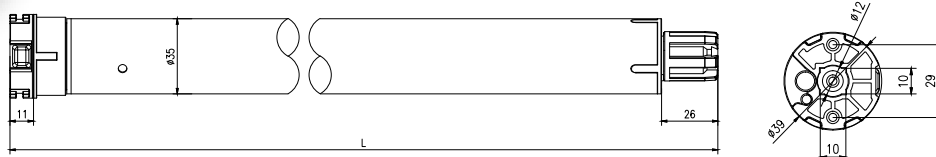
BEST CHOICE FOR AUTOMATION SYSTEM where electrically controlled 4 core motors are required.

Limits may be set by using either the WSB01 limit setting tool or by using the button on the motor head.



Push Button Type

Electronic Limit Switch Parallel
Connector Motor - 35mm diameter



Specifications - 240V / 50Hz

Type	5/28
Rated Torque (N.m)	5
Output Speed (rpm)	28
Nominal Consumption (W)	116
Nominal Voltage (V)	240
Nominal Current (A)	0.49
Running Time (Min)	4
Protection Index (IP)	44
Total Length (mm)	560
Maximum Turns (Turn)	∞
Net Weight (Kg)	1.35

Product Certificates



WSEC50 30/17 Universal

7 year replacement warranty
Electronic limit switch
For use with building management systems
Parallel wiring compatible
4 core motor

BEST CHOICE FOR AUTOMATION SYSTEM where electrically controlled 4 core motors are required.

This motor is recommended for all external straight drop awning products.

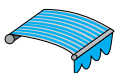
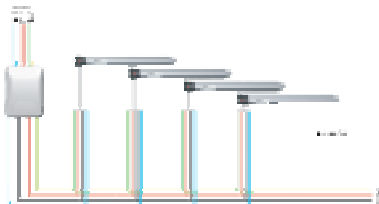
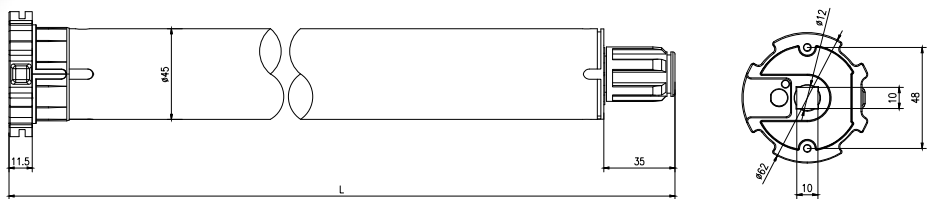
Limits may be set by using either the WSB01 limit setting tool or by using the button on the motor head.

These motors cannot be protected or controlled by Sun/Wind or Motion sensors.
Any protective features must be provided by the control system operating the motors.



Push Button Type

Electronic Limit Switch Parallel Connector
Motor with 45mm diameter



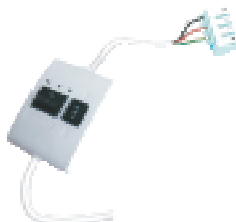
Awning



Roller Blind



Roller Shutter



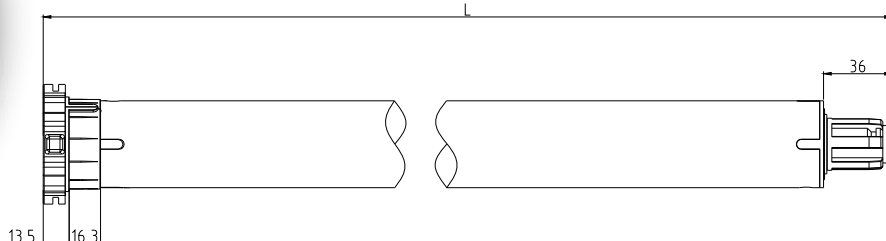
Specifications - 240V / 50Hz

Type	30/17
Rated Torque (N.m)	30
Output Speed (rpm)	17
Nominal Consumption (W)	226
Nominal Voltage (V)	240
Nominal Current (A)	0.95
Running Time (Min)	4
Protection Index (IP)	44
Total Length (mm)	570
Maximum Turns (Turn)	∞
Net Weight (Kg)	2.20

Product Certificates

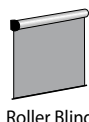
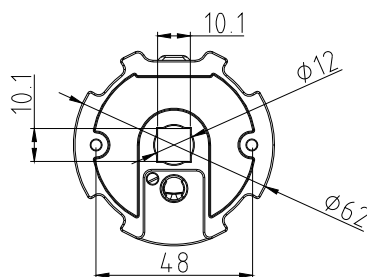


This 15Nm DC motor is ideal for most external straight drop awnings and zip systems. It's designed to be paired with the TYB002 solar panel shown at the bottom of the page.



Specifications - 12V DC

Type	15/12
Rated Torque (N.m)	15
Output Speed (rpm)	12
Nominal Consumption (W)	96
Nominal Voltage (V)	12
Nominal Current (A)	8
Maximum Power (W)	96
Protection Index (IP)	44
Total Length (mm)	565
Maximum Turns (Turn)	∞
Net Weight (Kg)	2.6



Roller Blind



Roller Shutter

Product Certificates



TYB002 Solar panel and battery pack for WSERD50 (Optional power source)

This unit is recommended for use with 50mm DC motors. It's a solar panel with 4400mAh storage capacity using rechargeable Lithium batteries.

The batteries will be fully charged in 80 hours of direct sunlight, and when full, will hold enough charge for about 50 days of normal operation without further charging. In the event that the batteries are depleted by excessive use or poor solar panel positioning, the batteries can be recharged in a few hours by connecting an external charger to the unit.

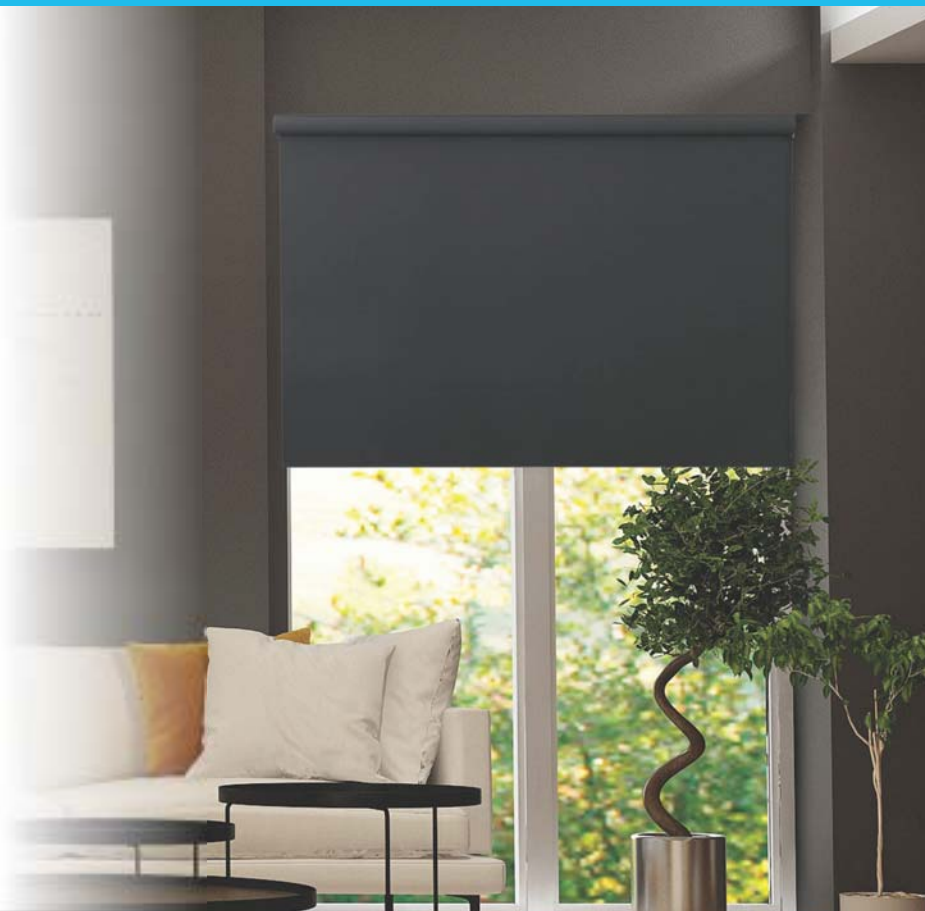
- New tear drop design
- Monocrystalline silicone material
- Nominal capacity 4400 mAh
- Charging voltage 16.8v/1A, plug size 3.5x1.35mm
- Charging time 8 hours
- Output voltage 11.1v/4.5A
- Working temperature -10°C to 45°C
- Protection index IP67
- Dimensions 546mm x 90mm x 32mm



PLEASE NOTE:
3m extension cables are available

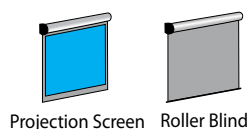
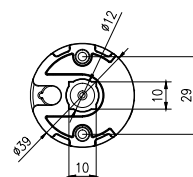
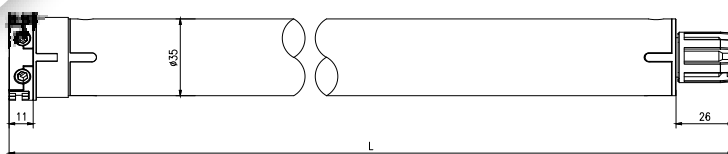
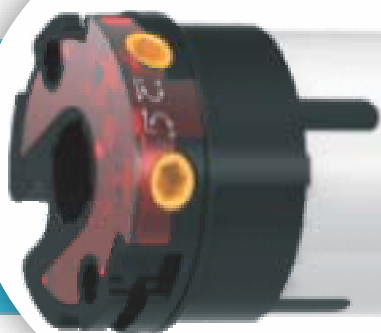
A basic 4 core motor for when you want a reliable workhorse without any bells and whistles.

Unlike the WSEC Series motors, these motors cannot be parallel wired.



Standard Type Motor

35mm diameter



Specifications - 240V / 50Hz

Type	5/28
Rated Torque (N.m)	5
Output Speed (rpm)	28
Nominal Consumption (W)	116
Nominal Voltage (V)	240
Nominal Current (A)	0.49
Running Time (Min)	4
Protection Index (IP)	44
Total Length (mm)	480
Maximum Turns (Turn)	40
Net Weight (Kg)	1.34

Product Certificates



WSS50S

10/17 S (short motor)
30/17
50/13

7 year replacement warranty
Standard type
Mechanical switch
4 core motor

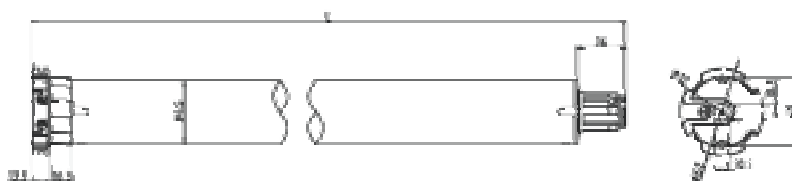
This is a standard mechanical limits motor like the WSS50 motors except that it is only 380mm long. This makes it suitable for many applications where the longer WSS50 won't fit, like roller shutters on very narrow bay windows for example.

To keep the size to a minimum, this motor has a different head to the standard WSS50 motors and as such requires a different mounting bracket as per the bracket image. This bracket will be supplied with the motor as standard. Also due to the short length, there is a maximum of 12 turns between limits. This equates to approximately 4 metres drop for a roller shutter using octagonal axle.

This motor is not recommended for internal roller blind use, due to limited mounting options and the limitation on the number of turns. Please see if the WSS40 motor on the previous page is short enough to meet your needs.

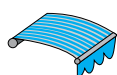
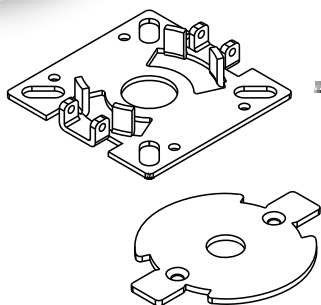
Standard Type Motor

45mm diameter



Specifications - 240V / 50Hz

Type	10/17 <small>SHORT MOTOR</small>	30/17	50/13
Rated Torque (N.m)	10	30	50
Output Speed (rpm)	17	17	13
Nominal Consumption (W)	155	226	244
Nominal Voltage (V)	240	240	240
Nominal Current (A)	0.68	0.95	1.06
Running Time (Min)	4	4	4
Protection Index (IP)	44	44	44
Total Length (mm)	380	455	480
Maximum Turns (Turn)	12	27	27
Net Weight (Kg)	1.86	2.40	2.47



Awning



Roller Blind



Roller Shutter



Product Certificates



WSS50 Grey 20/17

16

5 year replacement warranty
Standard type
Mechanical switch
4 core motor

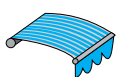


Alpha Grey is our economy product aimed specifically at the roller shutter market, and designed to compete at a price point that the normal premium Alpha product can't reach. This is a standard mechanical limits motor, available either with or without a molex connector. Although the normal Alpha motors punch well above their weight in terms of performance, the Alpha Grey motors are not as over-engineered as the premium product but absolutely meet their specifications and are a great reliable motor. The warranty has been reduced to the normal industry standard of 5 years and in the cheaper version of the 2 Alpha Grey motors, the Molex connector has also been removed. This motor simply has a 3m tail without a connector.

If you need a competitive edge on price but are tired of buying inferior motors through shutter suppliers that are often not even compliant to Australian standards, why not give Alpha Grey a try.



Available both with and without Molex connectors.



Awning



Roller Blind



Roller Shutter



Product Certificates



Specifications - 240V / 50Hz

Type	20/17
Rated Torque (N.m)	20
Output Speed (rpm)	17
Nominal Consumption (W)	155
Nominal Voltage (V)	240
Nominal Current (A)	0.68
Running Time (Min)	4
Protection Index (IP)	44
Total Length (mm)	445
Maximum Turns (Turn)	27
Net Weight (Kg)	2.40

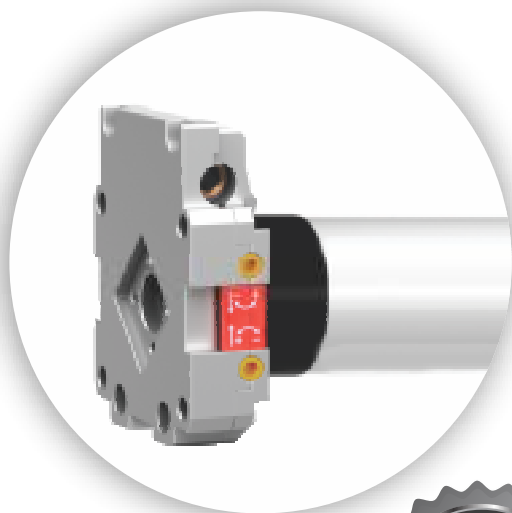
WSM50

30/17
50/13

manual override

7 year replacement warranty
Standard type
Mechanical switch
4 core motor

This is a mechanical limits motor, with the addition of manual override. This feature allows a roller shutter or awning to be operated by a crank handle in the event of a power failure. This feature is to allow for emergency operation only and is not suitable for general usage.



PLEASE NOTE:
For eyelet & crank handle options see page 52

Specifications - 240V / 50Hz

Type	30/17	50/13
Rated Torque (N.m)	30	50
Output Speed (rpm)	17	13
Nominal Consumption (W)	226	244
Nominal Voltage (V)	240	240
Nominal Current (A)	0.95	1.06
Running Time (Min)	4	4
Protection Index (IP)	44	44
Total Length (mm)	625	625
Maximum Turns (Turn)	27	27
Override Turn Ratio	45:1	45:1
Net Weight (Kg)	3.1	3.3



Roller Shutter



Awning



Product Certificates



WSME50

30/17
50/13

manual override with built-in receiver

7 year replacement warranty
Standard type
Mechanical switch
Built-in receiver
3 core motor

This motor is a remote control version of a mechanical limits motor, with the addition of manual override. This feature allows a roller shutter or awning to be operated by a crank handle in the event of a power failure.

This feature is to allow for emergency operation only and is not suitable for general usage.

Specifications - 240V / 50Hz

Type	30/17	50/13
Rated Torque (N.m)	30	50
Output Speed (rpm)	17	13
Nominal Consumption (W)	226	244
Nominal Voltage (V)	240	240
Nominal Current (A)	0.95	1.06
Running Time (Min)	4	4
Protection Index (IP)	44	44
Total Length (mm)	740	740
Maximum Turns (Turn)	27	27
Override Turn Ratio	45:1	45:1
Net Weight (Kg)	4.1	4.3



PLEASE NOTE:
For eyelet & crank handle options see page 52



Roller Shutter



Awning



Product Certificates

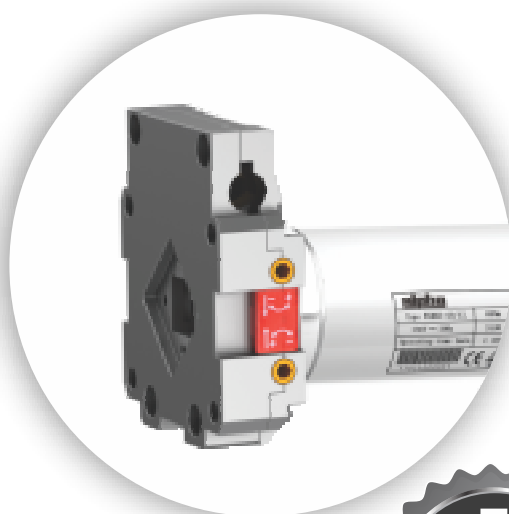


WSM60

80/12
120/9
140/9

manual override

7 year replacement warranty
Standard type
Mechanical switch
4 core motor

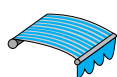


This is a mechanical limits motor, with the addition of manual override. This feature allows a roller shutter or awning to be operated by a crank handle in the event of a power failure. This feature is to allow for emergency operation only and is not suitable for general usage.

PLEASE NOTE: for eyelet and crank handle options see page 52

Specifications - 240V / 50Hz

Type	80/12	120/9	140/9
Rated Torque (N.m)	80	120	140
Output Speed (rpm)	12	9	9
Nominal Consumption (W)	370	488	488
Nominal Voltage (V)	240	240	240
Nominal Current (A)	1.6	2.15	2.15
Running Time (Min)	4	4	4
Protection Index (IP)	44	44	44
Total Length (mm)	630	660	660
Maximum Turns (Turn)	27	27	27
Net Weight (Kg)	6.15	6.18	6.18



Awning



Roller Shutter



Product Certificates

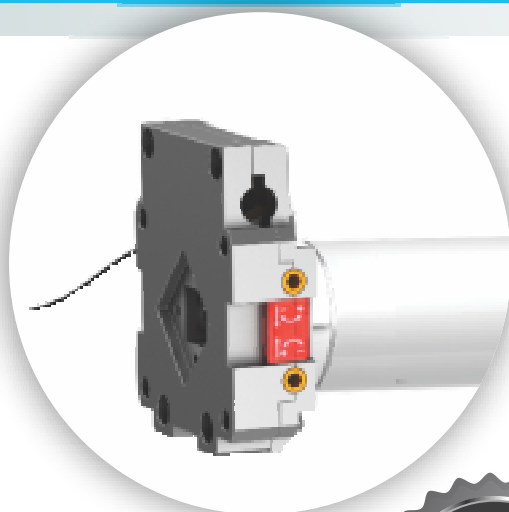


WSME60

80/12
140/9

manual override with built-in receiver

7 year replacement warranty
Standard type
Mechanical switch
Built-in receiver
3 core motor

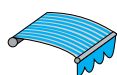


This motor is a remote control version of a mechanical limits motor, with the addition of manual override. This feature allows a roller shutter or awning to be operated by a crank handle in the event of a power failure. This feature is to allow for emergency operation only and is not suitable for general usage.

Specifications - 240V / 50Hz

Type	80/12	140/9
Rated Torque (N.m)	80	140
Output Speed (rpm)	12	9
Nominal Consumption (W)	370	488
Nominal Voltage (V)	240	240
Nominal Current (A)	1.6	2.15
Running Time (Min)	4	4
Protection Index (IP)	44	44
Total Length (mm)	830	830
Maximum Turns (Turn)	27	27
Net Weight (Kg)	6.15	6.16

PLEASE NOTE:
for eyelet and
crank handle
options see
page 52



Awning



Roller Shutter



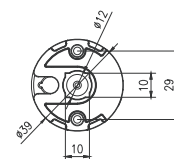
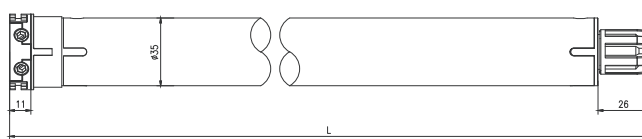
Product Certificates



WSEB40

5/28

7 year replacement warranty
Built in receiver
Mechanical limits
3 core motor



The WSEB40 is a 35mm mechanical limits motor with a built in receiver, perfect for internal roller blinds.

Specifications - 240V / 50Hz

Type	5/28
Rated Torque (N.m)	5
Speed (RPM)	28
Nominal Consumption (W)	121
Nominal Voltage (V) AC	240
Nominal Current (A)	0.53
Running Time (Min)	4
Protection Index (IP)	44
Total Length (mm)	660
Maximum Turns	27
Net Weight (Kg)	1.42



Roller Blind



Roller Shutter



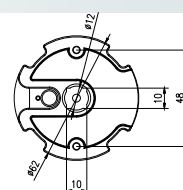
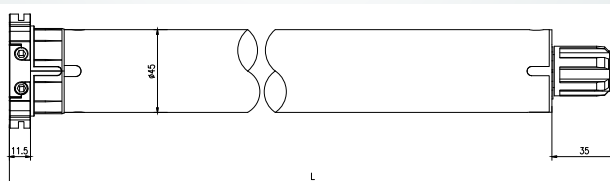
Product Certificates



WSEB50

30/17
50/13

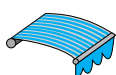
7 year replacement warranty
Built in receiver
Mechanical limits
3 core motor



The WSEB50 is a 50mm mechanical limits motor with a built in receiver, perfect for roller shutters.

Specifications - 240V / 50Hz

Type	30/17	50/13
Rated Torque (N.m)	30	50
Speed (RPM)	17	13
Nominal Consumption (W)	226	244
Nominal Voltage (V) AC	240	240
Nominal Current (A)	0.95	1.06
Running Time (Min)	4	4
Protection Index (IP)	44	44
Total Length (mm)	570	570
Maximum Turns	27	27
Net Weight (Kg)	2.4	2.6



Awning



Roller Shutter



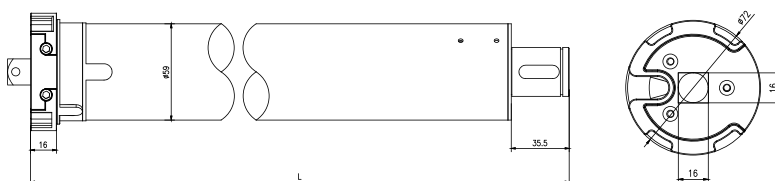
Product Certificates



WSEB60

80/12
120/9

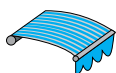
7 year replacement warranty
Built in receiver
Mechanical limits
3 core motor



The WSEB60 is a 60mm mechanical limits motor with a built in receiver for those super heavy duty jobs.

Specifications - 240V / 50Hz

Type	80/12	120/9
Rated Torque (N.m)	80	120
Speed (RPM)	12	9
Nominal Consumption (W)	370	488
Nominal Voltage (V) AC	240	240
Nominal Current (A)	1.6	2.15
Running Time (Min)	4	4
Protection Index (IP)	44	44
Total Length (mm)	710	712
Maximum Turns	27	27
Net Weight (Kg)	4.75	4.76



Awning Roller Shutter



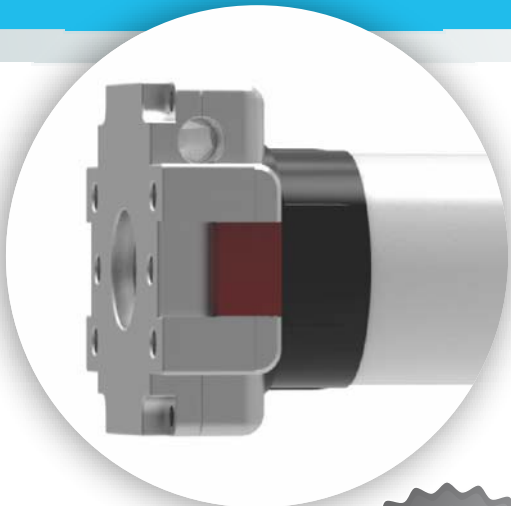
Product Certificates



WSME50 E

50/13

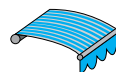
7 year replacement warranty
Electronic limit switch
Built-in receiver
Wireless limit setting
3 core motor



This motor has manual override and electronic limits. Unlike most override motors, the electronic limits allow easy installation and programming, as well as the flexibility to be used in cassette systems that block access to typical mechanical limit mechanisms on conventional manual override motors.

Specifications - 240V / 50Hz

Type	50/13
Rated Torque (Nm)	50
Output Speed (rpm)	13
Nominal Consumption (W)	244
Nominal Voltage (V)	240
Nominal Current (A)	1.06
Running Time (Min)	4
Protection Index (IP)	44
Total Length (mm)	630
Maximum Turns (Turn)	∞
Net Weight (kg)	3.5



Product Certificates





The Alpha Curtain & Vertical Systems

Curtain Motors

3 year replacement warranty
Electronic limit switch built-in receiver
Auto limits setting
Soft start and soft stop

Hand operable during power-off
Touch control
3rd intermediate limit position

WSCMJ-AC-2.0

AC curtain motor



WSCMI-DC-2.0

Lithium battery curtain motor and wall mount battery pack



ALDC charger
16.8V required

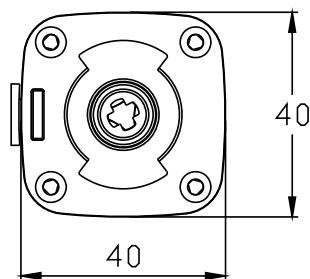
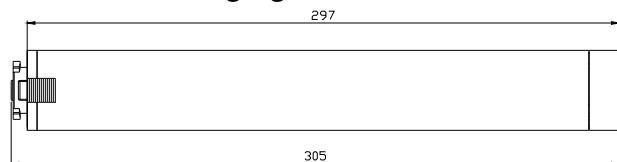
1 metre connecting cable supplied



This new curtain motor it's available in both AC (WSCMJ) and DC (WSCMI) versions. Although very similar, there are a few main differences between the AC and DC variants. Both are remote control motors that are compatible with all Alpha controllers and our Neo App. Dry contact control is also available on both for use with switches or relays. Both also can be started by hand, have auto limits setting, and have the same pulling capacity of 50kg. Both also allow the curtain to be drawn by hand if power is disconnected.

The primary differences are as follows:

- Slightly slower run speed for the DC motor 15cm second vs 18cm second
- AC version comes with normal tail and molex connector - 3 core
- DC version comes with a wall mount cradle for the battery pack and a removable battery for easier charging



Product Certificates



Specifications

Type	AC	DC
Rated Torque (N.m)	2	2
Maximum Pulling Weight (kg)	50	50
Running Speed (cm per second)	18	15
Nominal Voltage (V)	240	12
Nominal Current (A)	0.47	4
Running Time	∞	∞
Protection Index (IP)	20	20
Total Length (mm)	300	250
Maximum Turns	∞	∞
Net Weight (Kg)	0.92	0.66
Relay or Switch Control	Yes	Yes

Curtain Motors

3 year replacement warranty
Auto limits setting
4 core motor

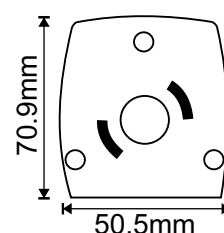
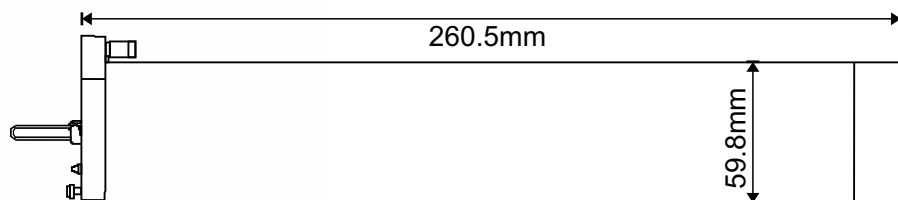
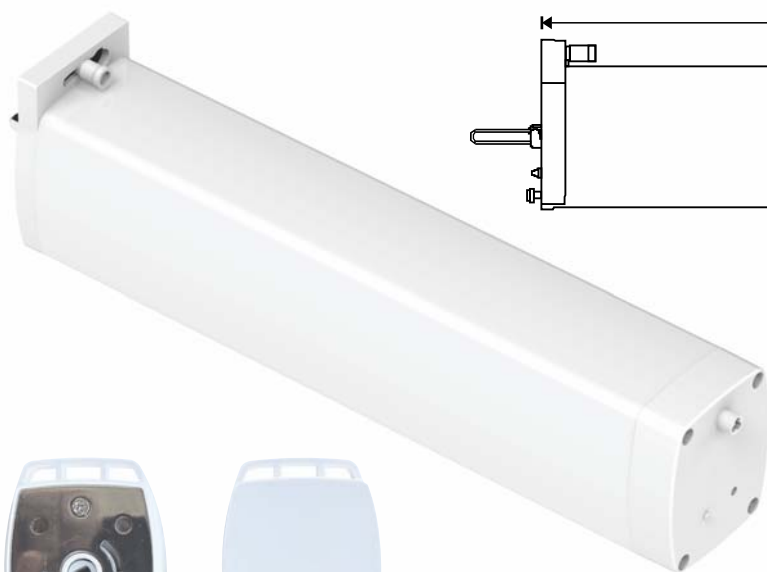
Hand operable during power-off
Touch control

WSCMXG-AC-1.2

AC 4-core curtain motor

Introducing Alpha's innovative 4-core Curtain Motor which can be used with a 4 wire home automation system or a wall switch.

Features include automatic limit setting and touch control to start motor.



CMA-XG
idle ends



Product Certificates

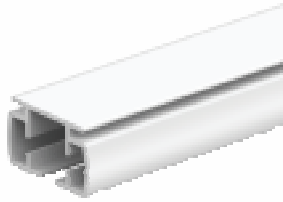


Specifications

Type	AC
Rated Torque (N.m)	1.2
Maximum Pulling Weight (kg)	50
Nominal Voltage (V)	240
Nominal Current (A)	0.1
Protection Index (IP)	40
Total Length (mm)	260
Maximum Turns	∞
Net Weight (Kg)	1

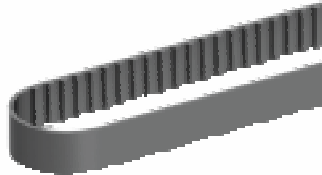
Curtain Accessories

CMA6



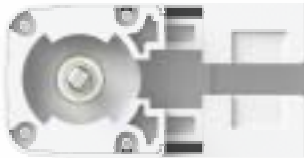
CURTAIN TRACK
motorised aluminium track
6m lengths, white

CMA1



DRIVE BELT
with high strength non-corrosive
steel wire
(minimum qty 100m roll)

CMA2J

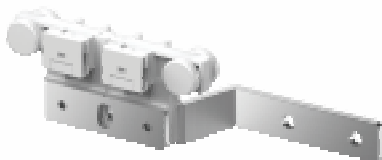


DRIVE UNIT/IDLE
2 required per track
(Sold in pairs, 10 sets per pack)



CMA-XG
IDLE ENDS
for 4 core
motor

CMA3A



CMA3B



MASTER CARRIER

CMA3A - Rigid master carrier
(STRAIGHT TRACK ONLY)

CMA3B - Bendable master carrier
(FOR USE WITH CORNERS)

1 piece for one side opening
2 pieces for centre opening
(10 units per pack)

CMA3F



BENDABLE MASTER CARRIER
for S Wave

Sold in sets of 2 (5 sets per pack)

CMA4



END STOP WITH HOOK
2 pieces required per track
(10 per pack)

CMA5



RETURN HOOK
2 pieces required per track
(10 per pack)

Curtain Accessories

CMA6



RUNNER

8 pieces required per metre
(600 per pack)

CMA8
(A or B)



RIPPLE FOLD CARRIER WITH PENDANTS

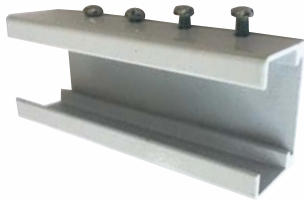
CMA8A - 80mm spacing sold in 40m rolls

(NOT SUITABLE FOR USE WITH CORNERS)

CMA8B - 60mm spacing sold in 30m rolls

CMA9

BASIC
TRACK JOINER



CMA9A

PREMIUM
TRACK JOINER

Almost invisible, super precise connector



CMA10/90

CORNER JOINER
connector for 2 tracks
at 90 degree angle



CMA10/135

CORNER JOINER
connector for 2 tracks
at 135 degree angle



CMA11



MOUNTING CEILING BRACKETS
(50 per pack)

CMA12



WALL BRACKETS

base only, requires an additional CMA11
per bracket (20 per pack)

CMA13



EXTENDED DOUBLE WALL BRACKET

base only, requires 2x CMA11 per bracket
(20 per pack)

Extendable Curtain Track



Alpha's extendable curtain track comes pre-assembled and is easy to install. Simply extend the track to the required width and install.

These curtain tracks require our 240 volt 0.9Nm curtain motor (WSCMJ-AC-0.9) or our 12-volt lithium-ion rechargeable curtain motor (WSCMI-DC-0.9). The ALDC16.8V charger is required to charge the lithium-ion battery pack.

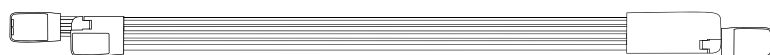
Key features and benefits

- Available for centre opening curtains only.
- Eliminates the hassle of measuring errors on curtain widths.
- Easy transportation for installers.
- Compatible with all Alpha Motors Remote Controls including Alpha Neo Link Box Smart Home System
- App integration includes Amazon Alexa, Siri, Google Assist, Control 4, Savant, IFTTT and Matter.
- Built in receiver with auto limit setting.
- Suitable for pleated curtains.
- Touch Control and can be drawn by hand if power is disconnected.
- Brackets are supplied for top fix and face fix. Optional double face fix brackets are also available.
- Dry contact interface.
- RX 17-30 extendable from 1700mm to 3000mm.
- RX 22-40 extendable from 2200mm to 4000mm.

EXTENDABLE TRACKS

RX 17-30

RX 22-40



RX 17-30



RX 22-40



WSCMT-AC-0.9 WSCMI-DC-0.9

Product Certificates



Pleated Curtains

Specifications

WSCMT-0.9 WSCMI-0.9

Type	AC	DC
Rated Torque (N.m)	0.9	0.9
Maximum Pulling Weight (kg)	20	20
Running Speed (cm/sec)	9/12/14	9/12/14
Nominal Voltage (V)	240	12
Nominal Current (A)	0.08	1.5
Running Time	∞	∞
Protection Index (IP)	40	40
Total Length (mm)	305	258
Maximum Turns	∞	∞
Net Weight (Kg)	0.77	0.66
Relay or Switch Control	Yes	Yes

Vertical Motor & Track

Alpha's new motorised vertical/curtain track and accessories are available for use with the WSCMXF-AC-2.0 motor. This motor is available in 240-volts and can only be operated by the Eclipse RE701V single channel, RE702V two channel or RE703V six channel remote control.

Key features and benefits

- Left, right or centre opening.
- 180 degree rotation in both directions via the remote control.
- Can be used for Vertical Blinds or Slat style Curtains.
- Quiet operation.
- Adjustable motor speed.
- Touch Control and can be drawn by hand if power is disconnected.
- Built in receiver with auto limit setting.
- App integration with Alpha Neo includes Amazon Alexa, Siri, Google Assist, Control 4, Savant, IFTTT and Matter.
- Slow start and slow stop
- The motor is installed horizontally and is hidden behind the track.
- 75mm & 105mm blade spacing.



WSCMXF-AC-2.0

Eclipse Vertical Remote Control with slide wheel to rotate blade angle.



RE701V
1 channel
remote



RE702V
2 channel
remote



RE703V
6 channel
remote

Specifications WSCMXF-AC-2.0

Type	AC
Rated Torque (N.m)	2
Maximum Pulling Weight (kg)	50
Running Speed (cm/sec)	4/5/6
Nominal Voltage (V)	100-240
Nominal Current (A)	0.1
Running Time	∞
Protection Index (IP)	40
Total Length (mm)	332
Maximum Turns	∞
Net Weight (Kg)	0.77
Relay or Switch Control	No

Product Certificates

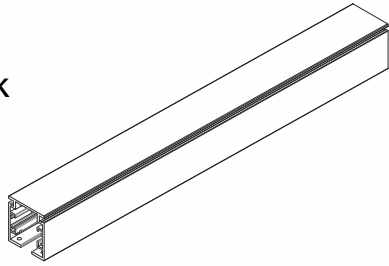


Verticals

Vertical Track Accessories

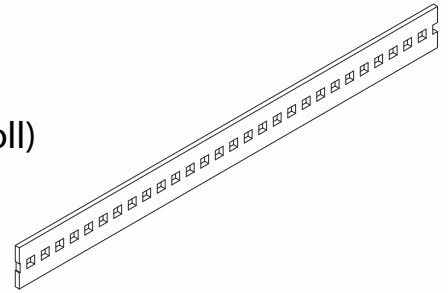
CMVT

aluminium track
6 metre lengths
(6 per pack)



CMV1

belt
(100m roll)



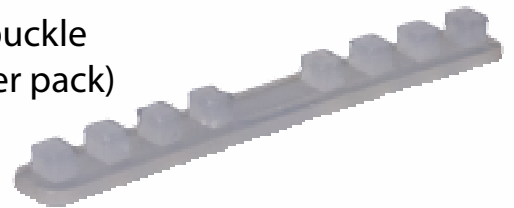
CMV2

drive pulley
(10 sets
per pack)



CMV3

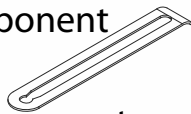
belt buckle
(10 per pack)



CMV4 75mm spacing component
(500 per pack)

CMV5 105mm spacing component
(500 per pack)

CMV8 86mm spacing component
(500 per pack)



CMV6

passive runner
(500 per pack)



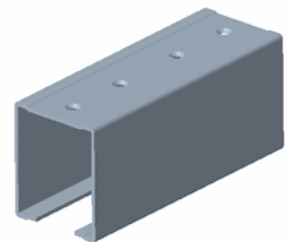
CMV7

active runner
(20 per pack)



CMV9

track joiner



CMV11

ceiling
mounting
bracket
(100 per pack)



CMA12

face fix bracket
(20 per pack)
also requires
CMV11



Alpha-Neo App & Link Box

ALPHA^{NEO}

 matter



Control⁴

SAVANT

App integration
made easy


amazon alexa

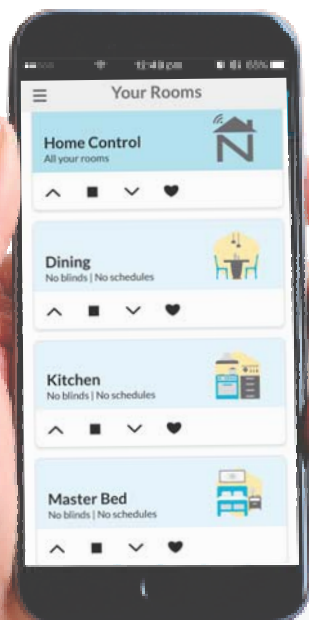



works with the
Google Assistant



This app is extremely versatile and easy to set up. It controls motorised products individually, or by area, or the whole house at once from anywhere in the world with an internet connection. All functionality can be scheduled to operate automatically.

Simply purchase the link box and download the free app for either Android or Apple. This app is compatible with all Alpha remote control motors. There is no limit to the number of control devices you can connect. There are 30 control groups (rooms) available and you can add up to 8 blinds per group. Additionally, you can setup up to 40 schedules to automate functionality.



Specifications

Type	
Nominal Voltage (V)	5
Nominal Current (A)	1
Frequency MHz	433.92
Code Type	Rolling
Power Requirements	5V DC
Number of Channels	Max 240
Total Length (mm)	75
Total Width (mm)	60
Total Height (mm)	25

Remote Controls Pioneer



Introducing the new range of Pioneer series remote controls, with a new sleeker look and wall holder design. The other big change is the addition of a battery cover, so there is no more need to unscrew the back to change the battery. Available in single or 4 channel versions without a screen, or 4, 8 or 16 channel versions with a screen, as well as a 4 channel option with timer. Incorporating soft silicone rubber edges and buttons, this is a great remote for use with external products where being a bit more bounce proof is an advantage. All Alpha remotes and receivers are inter-compatible.

Single Channel



RE101

Specifications

Channels	1
Frequency (MHz)	433.92
Codes	Rolling
Wall Mount	Yes

4 Channel



RE102

Specifications

Channels	4
Frequency (MHz)	433.92
Codes	Rolling
Wall Mount	Yes

With the 4, 8 & 16 channel remotes you can control 4, 8 or 16 different motors or receivers separately or any group among them.

The 4T is a 4 channel variant which can set up 8 different open/close times and also select days of the week.



RE103

Specifications

Channels	4, 8, 16, 4T
Frequency (MHz)	433.92
Codes	Rolling
Wall Mount	Yes

Keyring Remote



RE110

Specifications

Channels	1
Frequency (MHz)	433.92
Codes	Rolling

Remote Controls Navigator

7
★
★
★
YEAR
WARRANTY
QUALITY
ASSURED

The Navigator series has an elegant and simple design featuring stainless steel edge trim and a near invisible magnetic wall mount. The stainless finish is much more than simply a trim on the edge. It's actually a solid steel chassis to which the front and back panels are attached. This gives the remote a great deal of structural strength, but additionally adds a significant feel of weight and quality in the hand that customers often notice. Available in single and 5 channel without screens, and 4, 8 and 16 channel with screens as well as single and 4 channel options with timers.



RE301

Specifications

Channels	1
Frequency (MHz)	433.92
Codes	Rolling
Magnetic Wall Mount	Yes



RE302

Specifications

Channels	5
Frequency (MHz)	433.92
Codes	Rolling
Magnetic Wall Mount	Yes



RE303

Specifications

Channels	4, 8, 16 1T, 4T
Frequency (MHz)	433.92
Codes	Rolling
Magnetic Wall Mount	Yes

With the 4, 8 & 16 channel remotes you can control 4, 8 or 16 different motors or receivers separately or any group among them.

The 1T & 4T are single and 4 channel variants, either of which can set up 8 different open/close times and also select days of the week.

Remote Controls 3 Series PLUS



RE306A

The RE306A is 2 channel remote with separate button sets for each channel for super simplicity.



Specifications

Channels	2
Frequency (MHz)	433.92
Codes	Rolling
Magnetic Wall Mount	Yes

RE301-i

The RE301i is a single channel remote, but with the clever function of being able to select 25%, 50% and 75% positions between the set limits. This function works with all Alpha WSER and WSERD series motors.



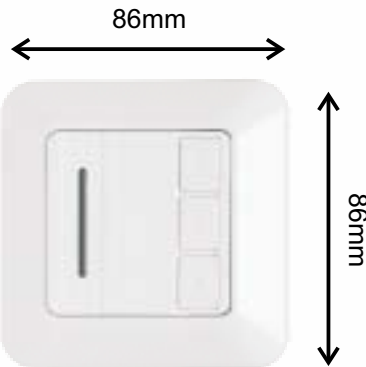
Specifications

Channels	1
Frequency (MHz)	433.92
Codes	Rolling
Magnetic Wall Mount	Yes

Wall Mount Remote Controls

7 year warranty

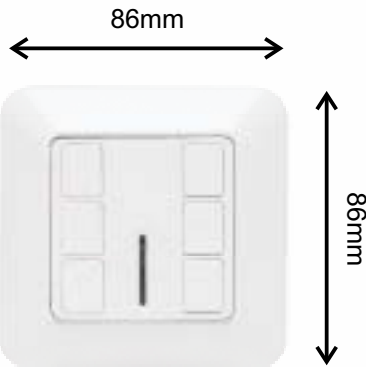
RE201



Specifications

Channels	1
Frequency (MHz)	433.92
Codes	Rolling
Wall Mount	Yes

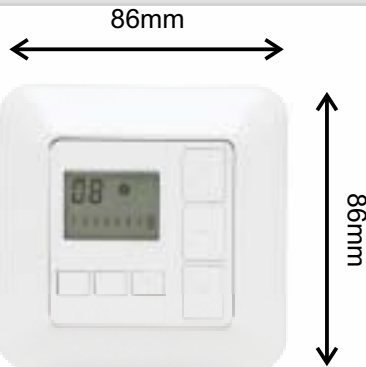
RE202



Specifications

Channels	2
Frequency (MHz)	433.92
Codes	Rolling
Wall Mount	Yes

RE203-8C

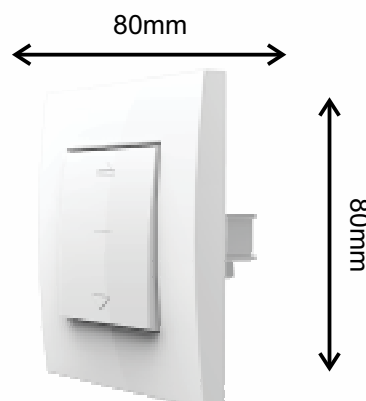


Specifications

Channels	8
Frequency (MHz)	433.92
Codes	Rolling
Wall Mount	Yes

A3623

**Hard Wired
Wall Switch**

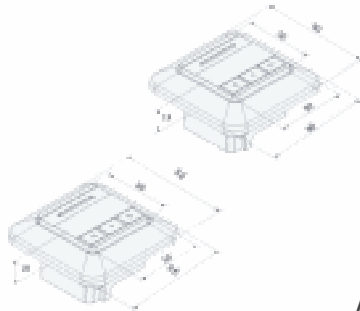


Mechanical locking paddle
switch for WSEC & WSS
Series motors

Receivers

7
★
★
★
YEAR
WARRANTY
QUALITY
ASSURED

RC201

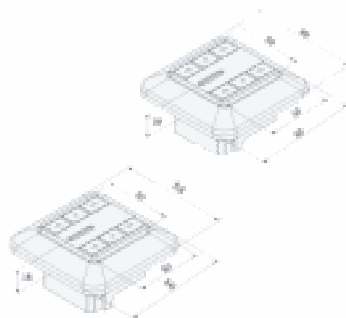


Specifications

Connect with motor	up to 3 units
Frequency (MHz)	433.92
Codes	Rolling
Receiver Power	400W
Voltage	230V 50Hz

Able to operate with a maximum of 15 remotes

RC202



Specifications

Connect with motor	2 units
Frequency (MHz)	433.92
Codes	Rolling
Receiver Power	600W
Voltage	230V 50Hz

Able to operate with a maximum of 15 remotes

RC001



Receiver for 60mm motors. Control buttons on side for up, down and stop.

Specifications

Connect with motor	1 unit
Frequency (MHz)	433.92
Codes	Rolling
Receiver Power	800W
Voltage	230V 50Hz

Able to operate with a maximum of 15 remotes

RC006



Specifications

Connect with motor	1 unit
Frequency (MHz)	433.92
Codes	Rolling
Receiver Power	400W
Voltage	230V 50Hz

Able to operate with a maximum of 15 remotes

RC008



Specifications

Connect with motor	1 unit
Frequency (MHz)	433.92
Codes	Rolling
Receiver Power	400W
Voltage	230V 50Hz

Able to operate with a maximum of 15 remotes

RE-DCE

Relay controlled remote



This device is a single channel remote control that plugs into a power point for permanent power and is controlled by connecting the device to relays in a control system or other switches. There are 4 wires connecting this item: common, up, stop and down. When the common wire comes into contact with any of the control wires, the function for that wire will be sent out to any WSER series motors or remote receivers this device is assigned to.

This device allows remote control Alpha motors to be operated by a huge variety of building management systems, automation equipment, press buttons or key turn switches as well as a remote control. This device is not practical for use in setting up the motors it will control. This must be done with a standard remote and the RE-DCE can be assigned to the motor separately for additional control options.

When planning your job with this item, only allow for connection to relays or switches that make contact as long as a button or switch is pressed and release automatically afterwards. Do not use rotary switches or switches that lock into position as the item will continue to send out the signal for as long as contact is made. This could produce unwanted results.



Product Certificates



RE-DCE Specifications

Channels	1
Frequency (MHz)	433.92
Codes	Rolling
Wall Mount	Yes
Voltage	240V 50Hz

Motion Sensors

for
cassette and folding arm
awnings

Available in black or white



This item attaches to the front channel of a folding Arm Awning/Cassette at either end. It measures the angle of the front bar and the amount of movement created by wind. When the sensitivity setting is reached, it sends a signal to the awning to close.

When used with a Universal or Cassette Awning motor, it will send a pulse to the motor a few times an hour telling the motor it's there and working. If the motor stops detecting this pulse due to flat batteries or failure, it will automatically retract the awning after about half an hour to both protect the awning and to alert the owner that the motion sensor is not working. Once the pulse is restored (usually by installing new batteries) normal operation will resume.



Although this item will control a Universal motor, the Universal motor does not have the extra protective functions mentioned above if the item stops sending the pulse. The motion sensor is a more reliable method of protection than the Sun/Wind sensors as it responds to actual physical movement of the front bar and not the wind speed detected by a device mounted nearby.

This unit has 9 pre-determined sensitivity settings.

Cannot be used in conjunction with Sun/Wind Sensors.

RS005W (white)

RS005B (black)



Product Certificates



Specifications

Frequency (MHz)	433.92
Codes	Rolling
Protection Index	IP44
Power	2x AAA Batteries

Sun & Wind Sensors

These devices cannot
be used in conjunction
with Motion Sensors

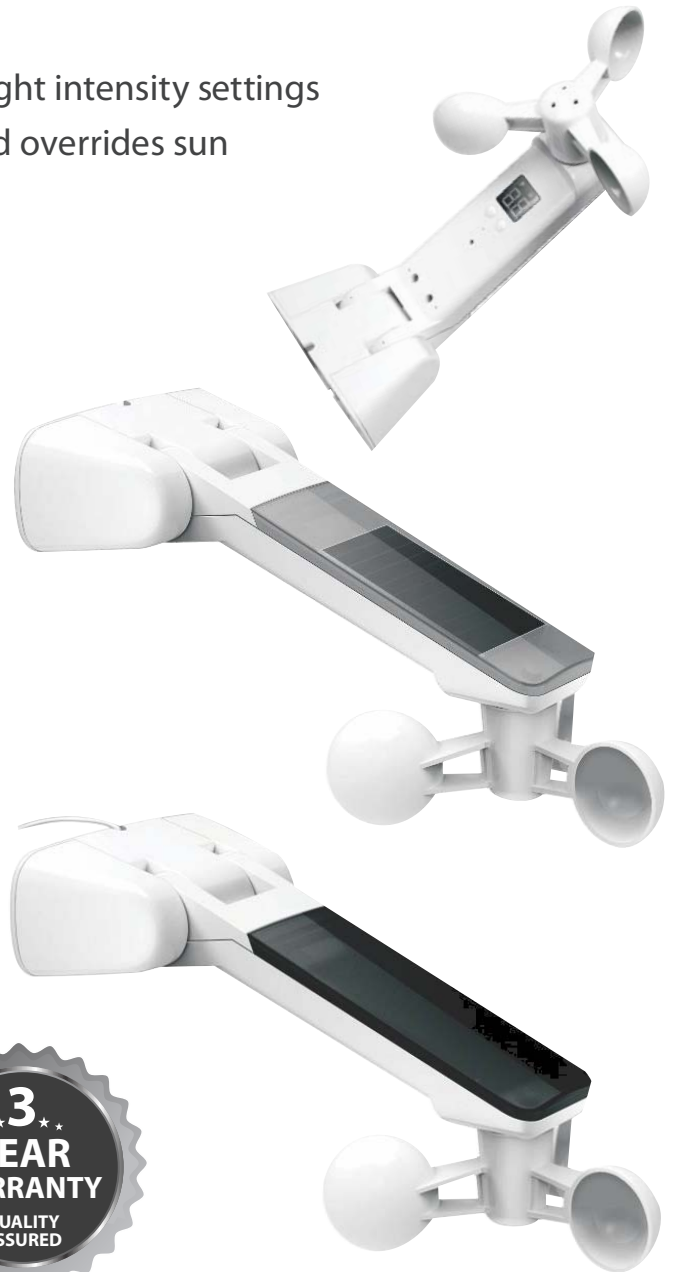
- Programmable with 5 wind speed and 9 light intensity settings
- Usable as sun and wind sensor where wind overrides sun
- Sun sensor can be disabled if required
- For use with WSER Series motors

RS001 Specifications

Frequency (MHz)	433.92
Codes	Rolling
Protection Index	IP44
Display	LED
Power	Solar Panel & Rechargeable Battery

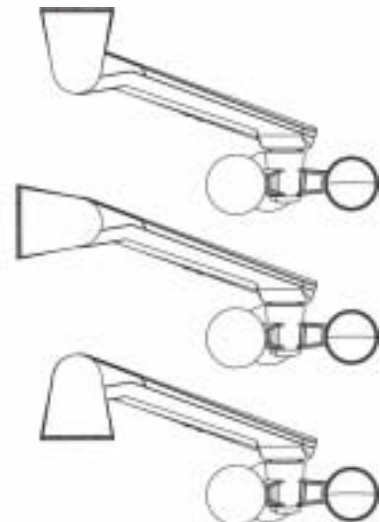
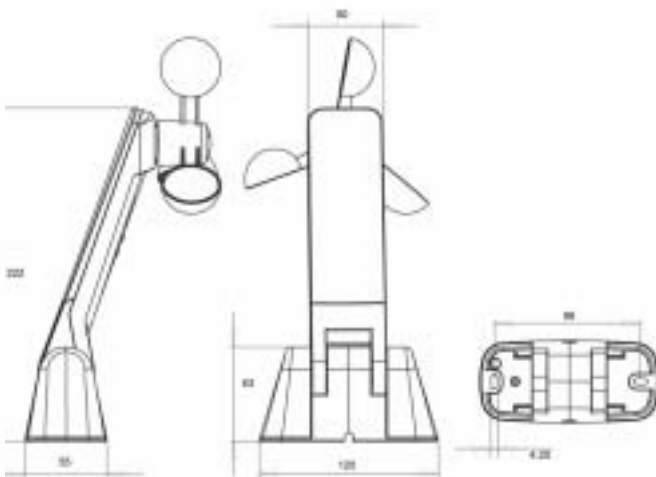
RS002 Specifications

Frequency (MHz)	433.92
Codes	Rolling
Protection Index	IP44
Display	LED
Power	5V DC Power Supply (supplied)



Dimension Drawing

Installation Drawing



Accessories

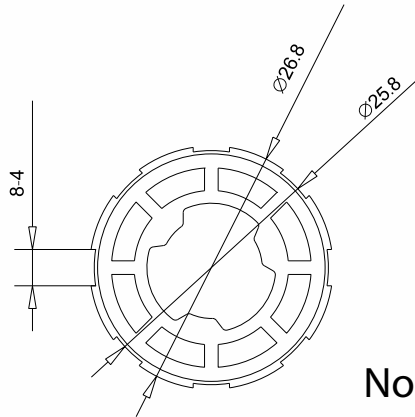
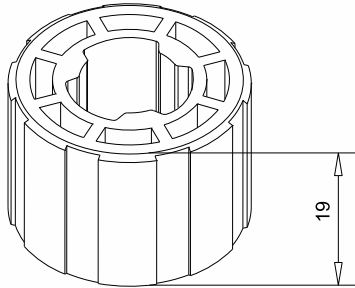


alpha
TUBULAR MOTORS PTY LTD

MOTORISATION MADE EASY

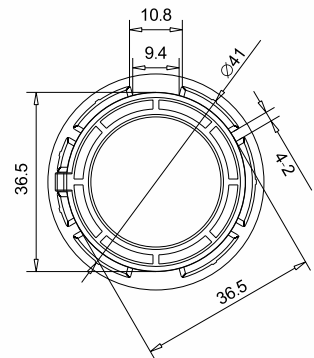
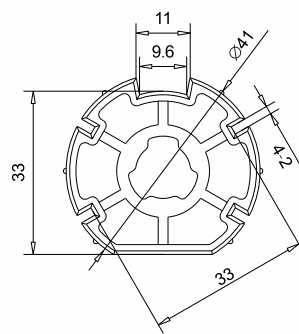
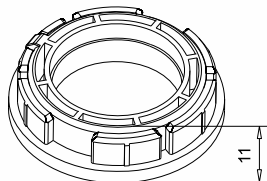
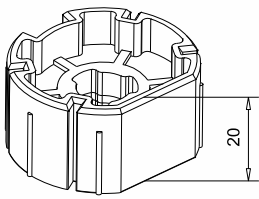
Crown & Drive Adapters

A2201

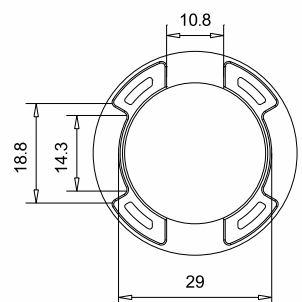
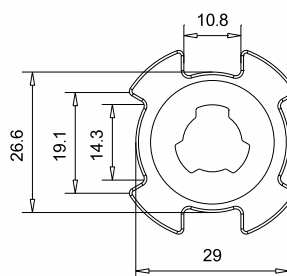
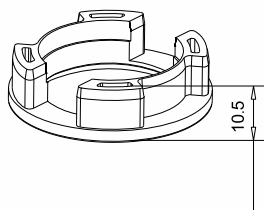
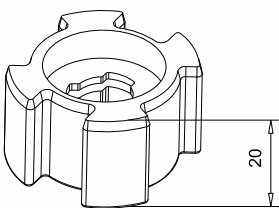


No crown required

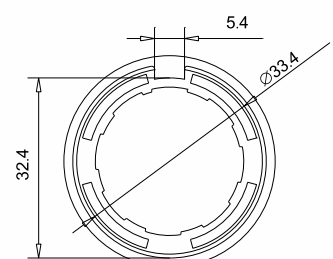
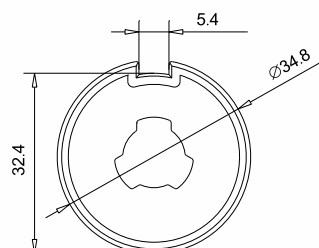
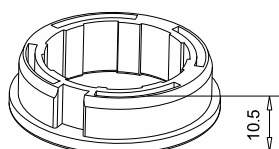
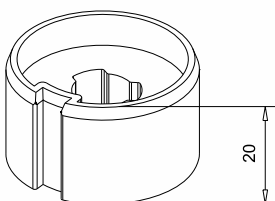
A2202



A2203

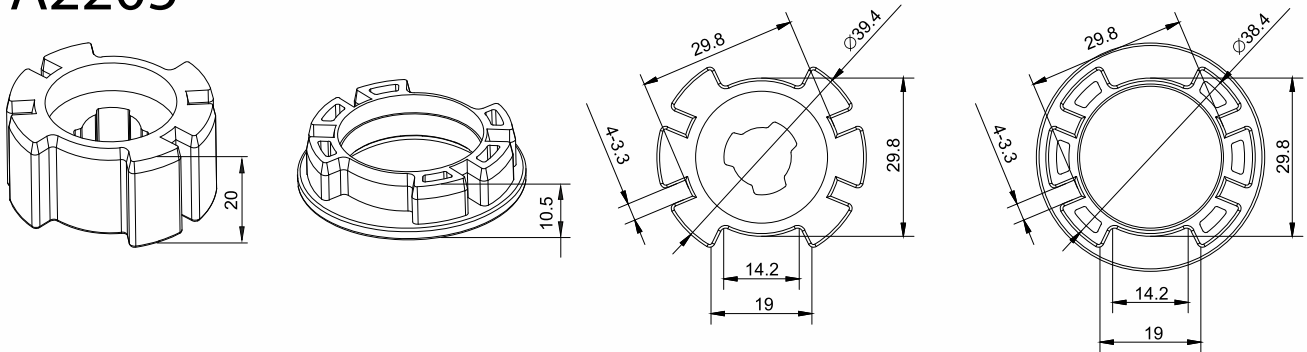


A2204

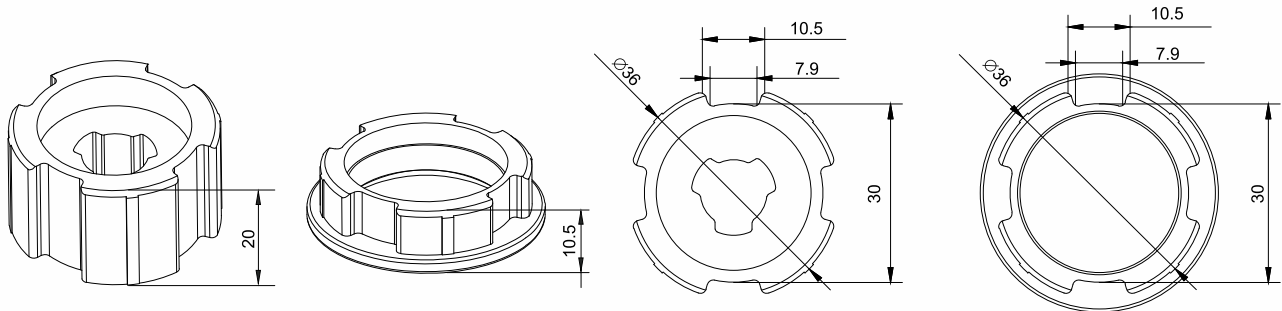


Crown & Drive Adapters

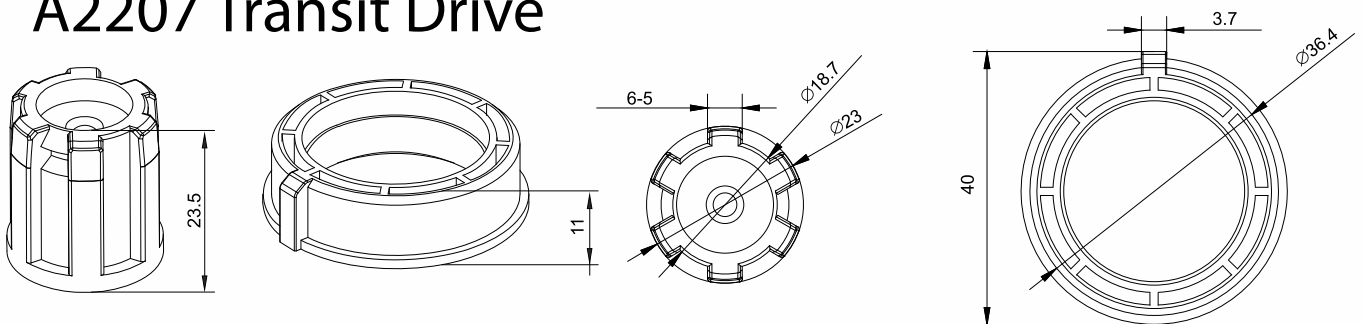
A2205



A2206

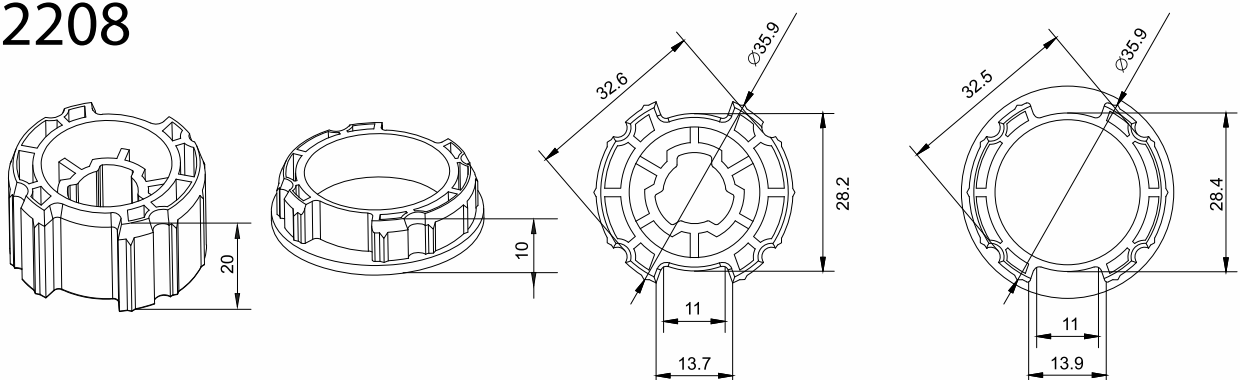


A2207 Transit Drive



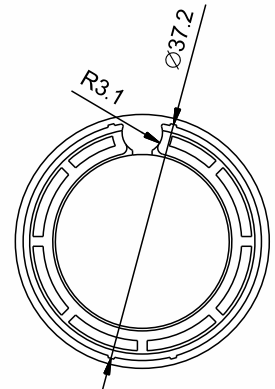
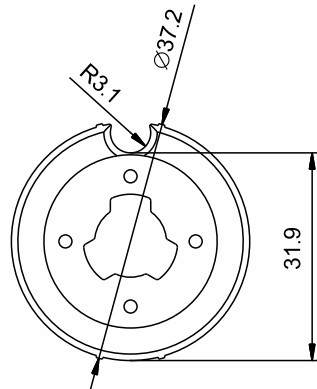
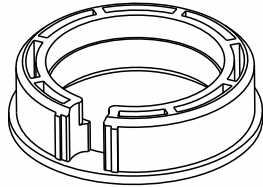
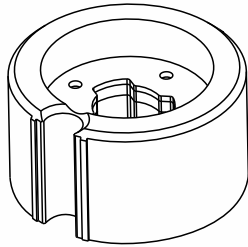
These are adaptors to allow connection of our 35mm motor fittings onto a 25mm motor.

A2208

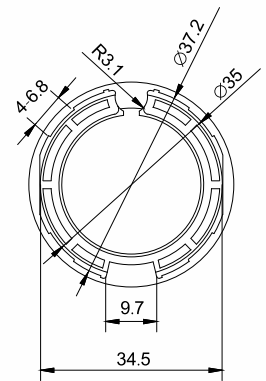
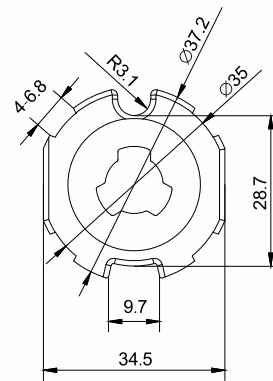
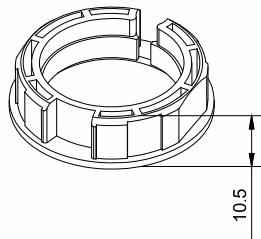
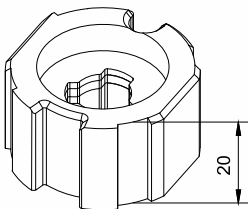


Crown & Drive Adapters

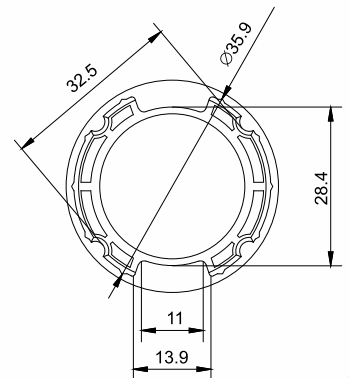
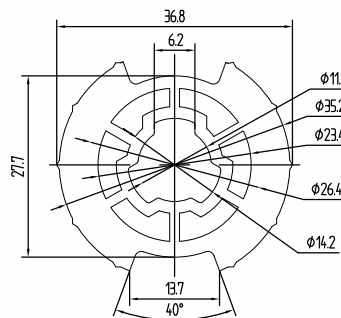
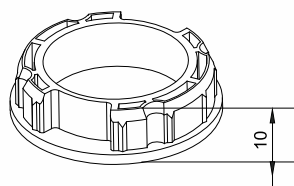
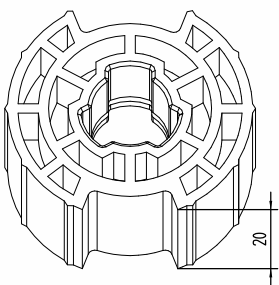
A2213



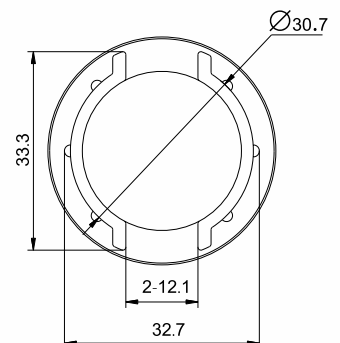
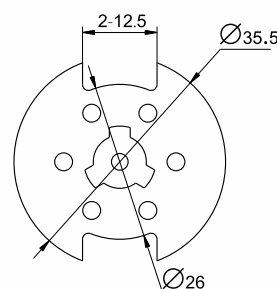
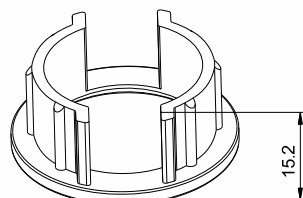
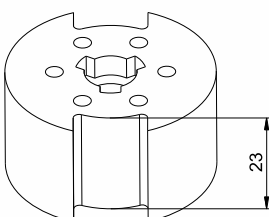
A2214



A2215

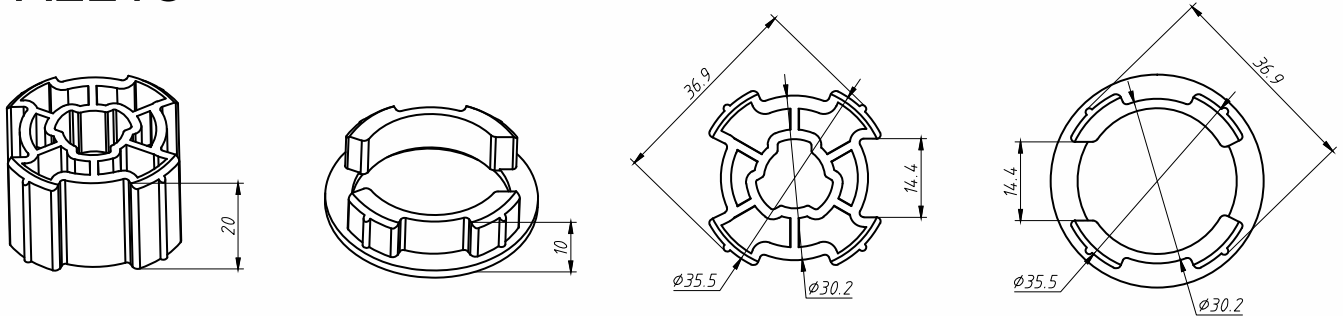


A2217

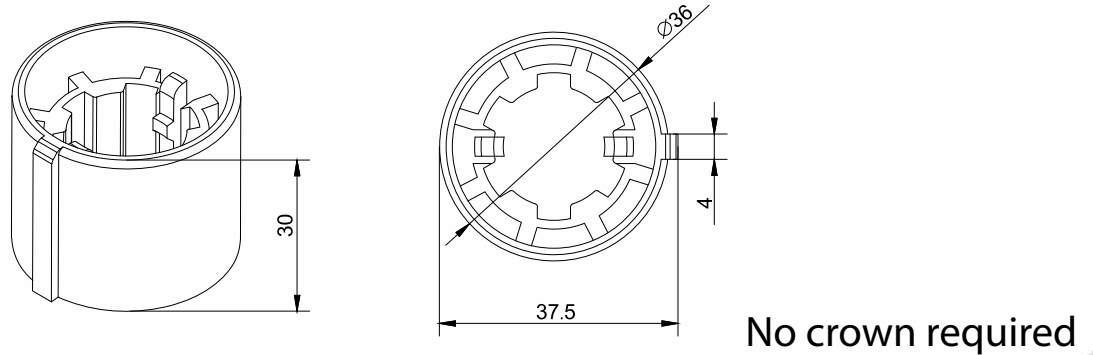


Crown & Drive Adapters

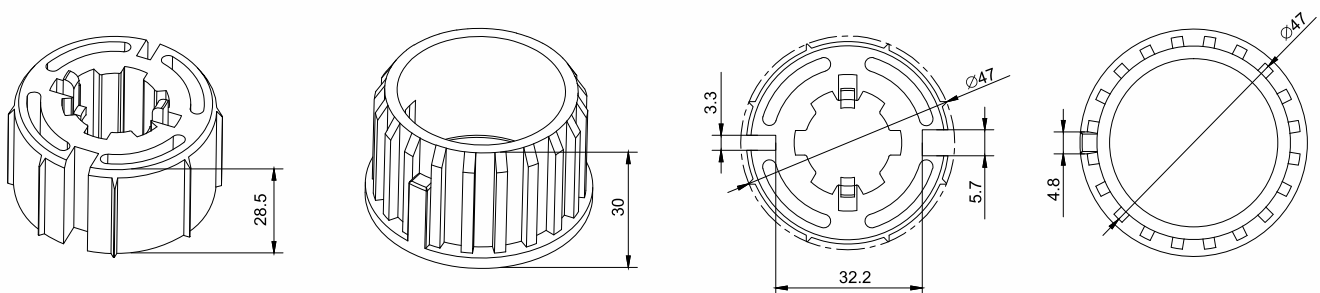
A2218



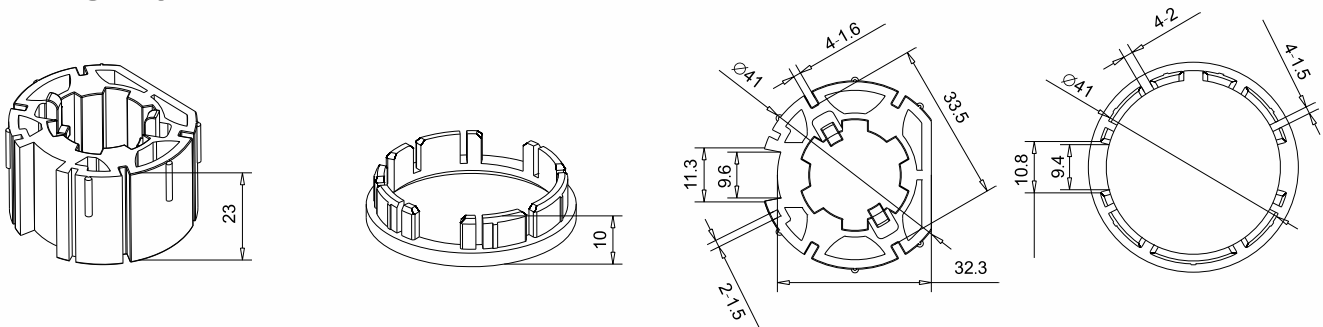
A2305



A2307

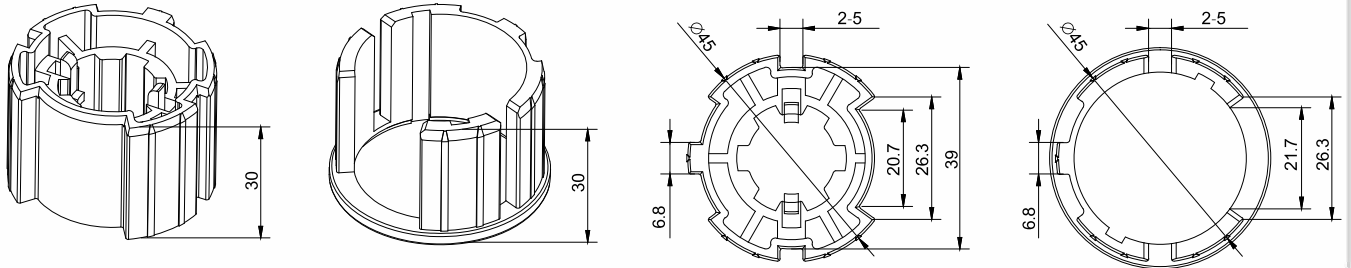


A2310

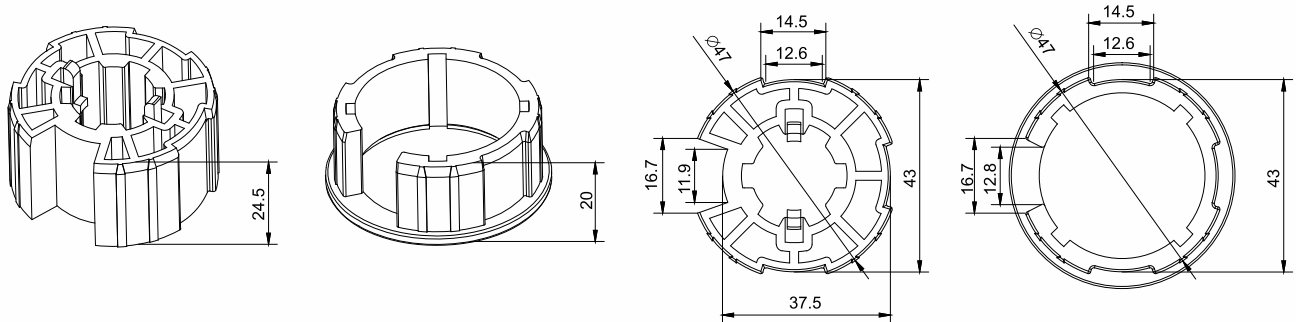


Crown & Drive Adapters

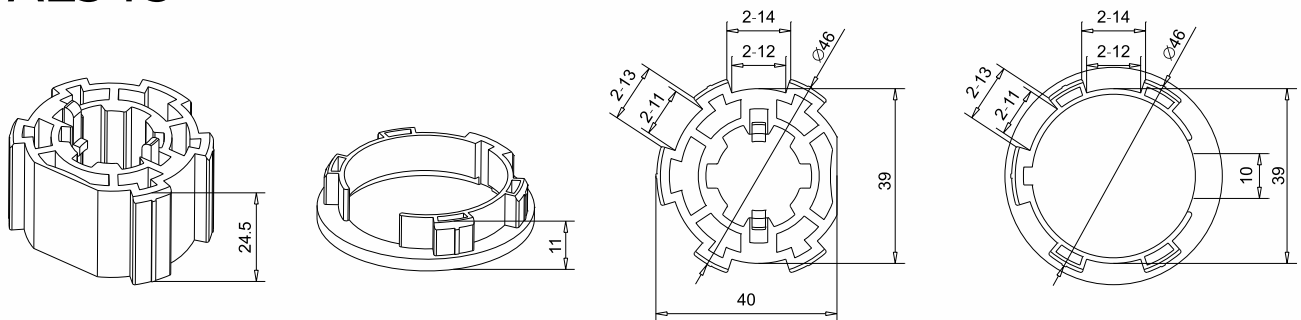
A2313



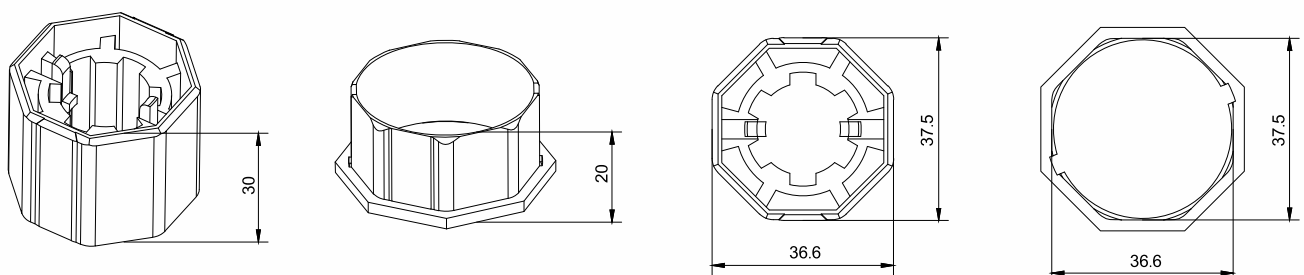
A2314



A2315

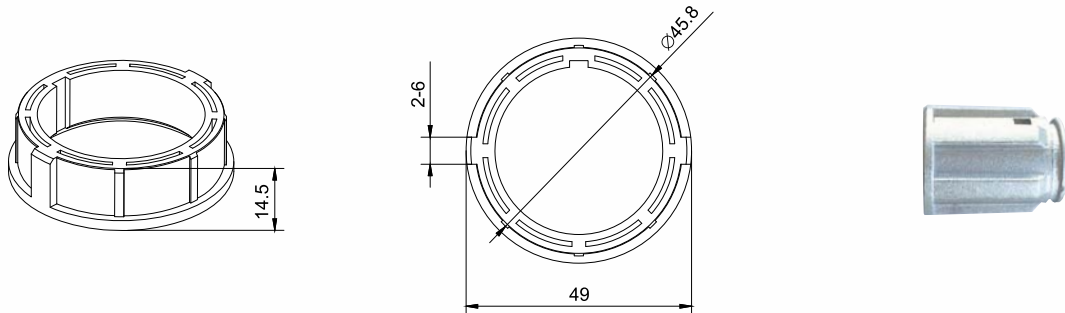


A2320

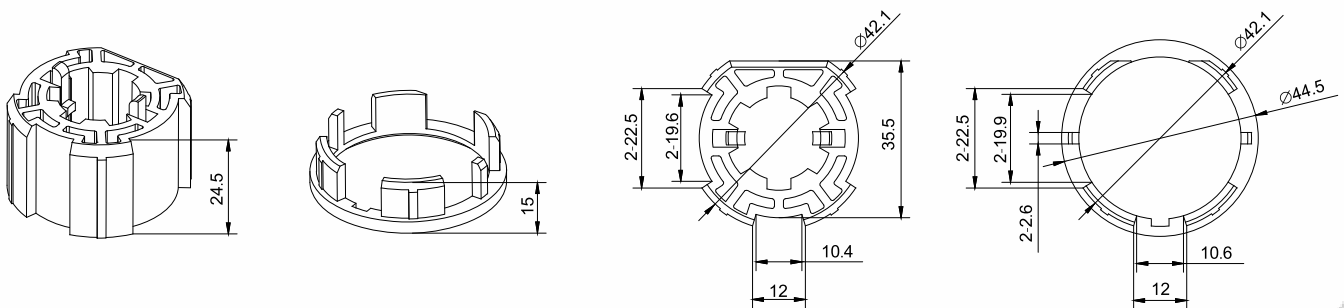


Crown & Drive Adapters

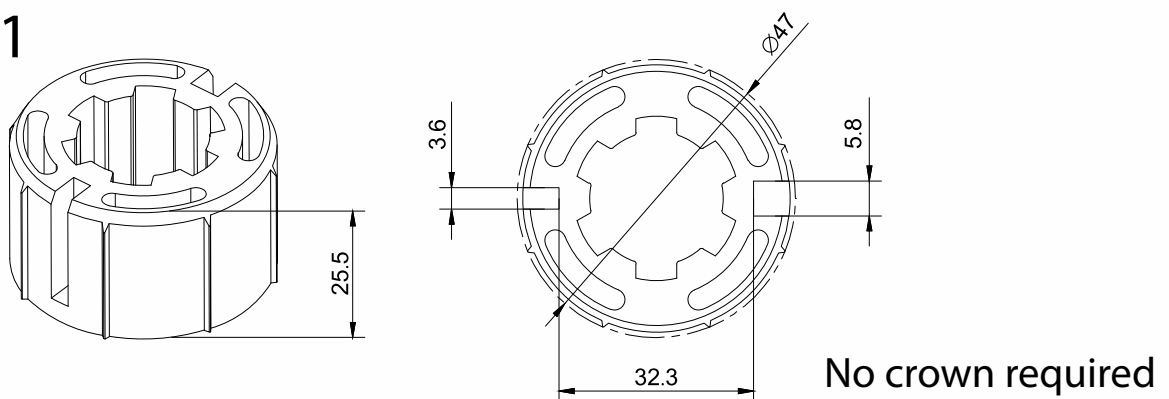
A2324 and Aluminum transit drive



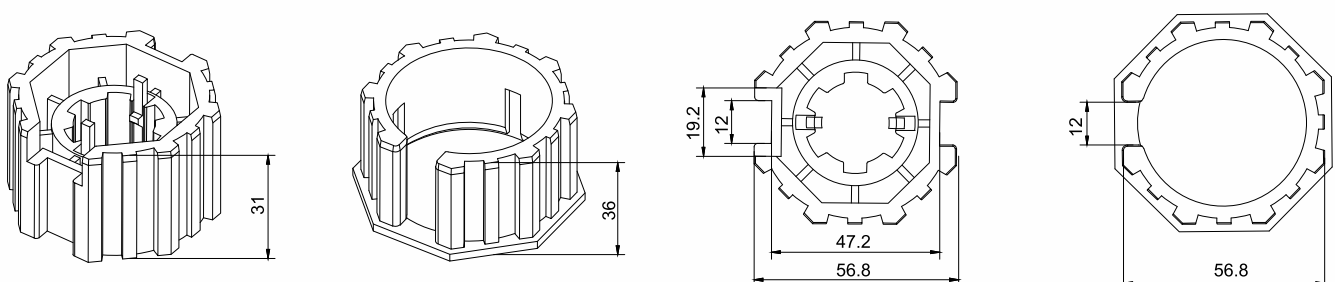
A2334



A2401

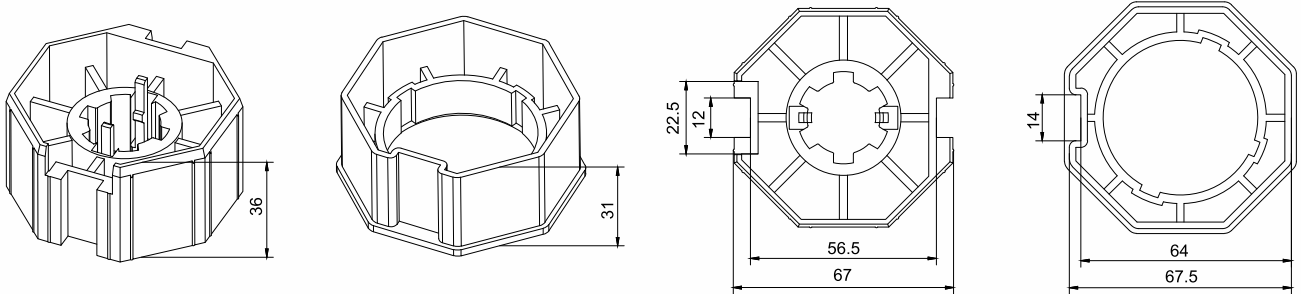


A2404

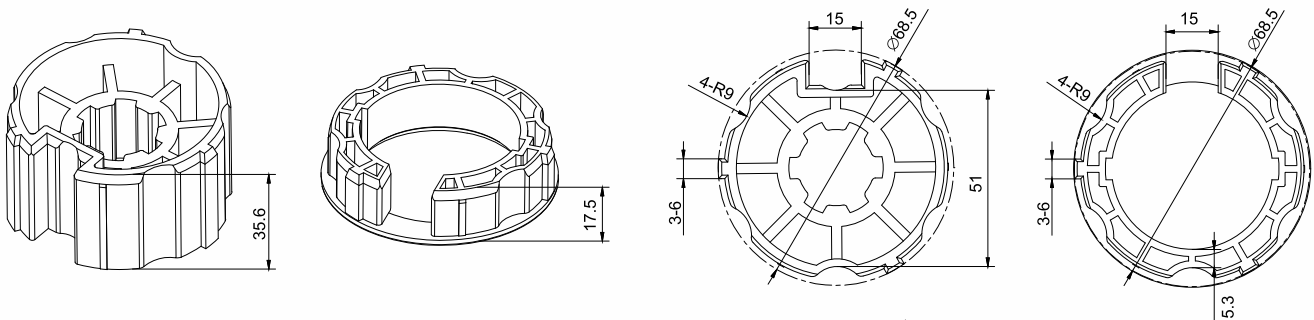


Crown & Drive Adapters

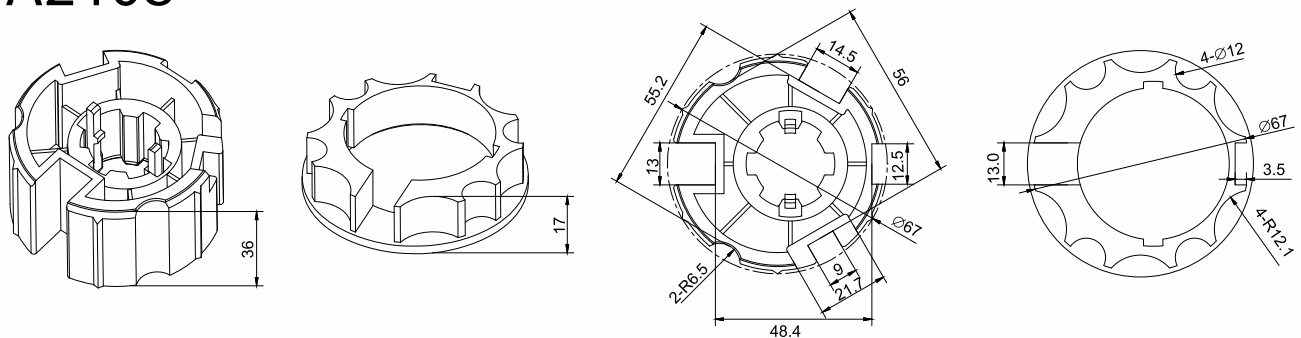
A2406



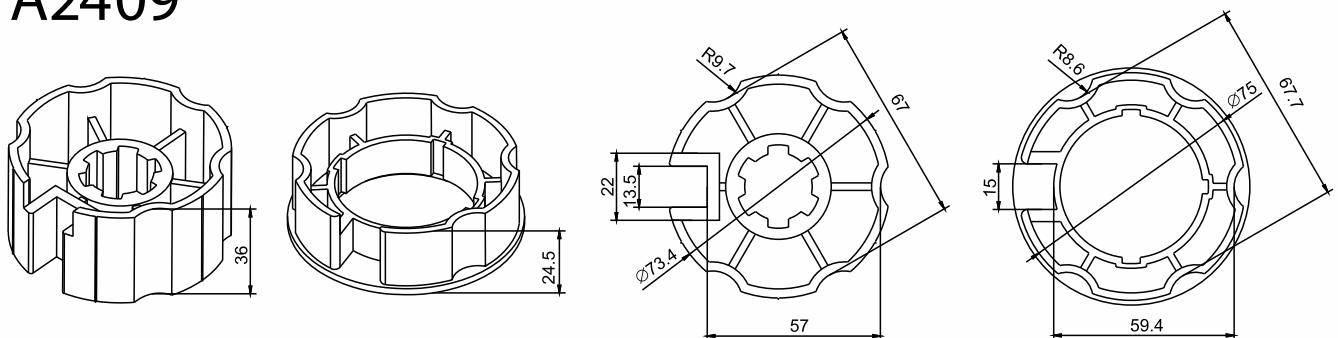
A2407



A2408

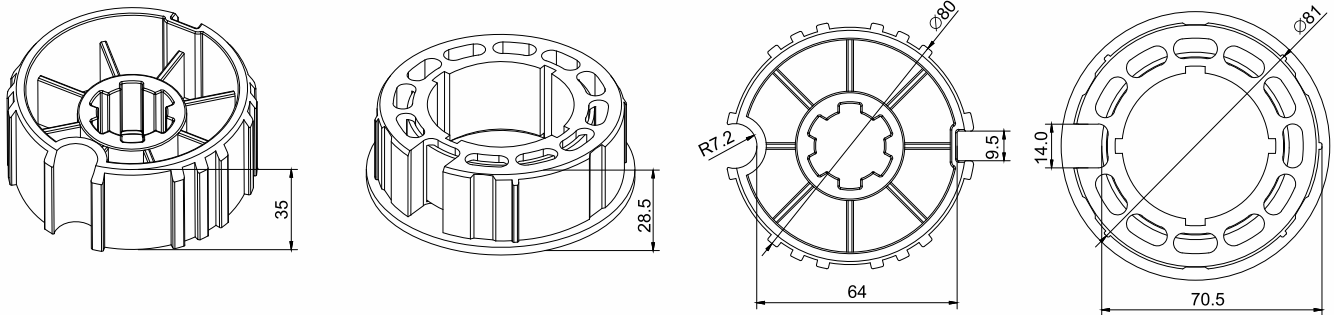


A2409

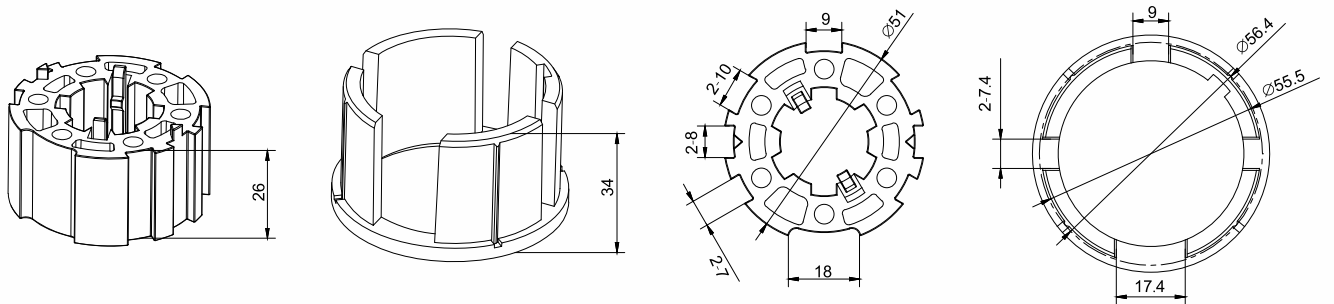


Crown & Drive Adapters

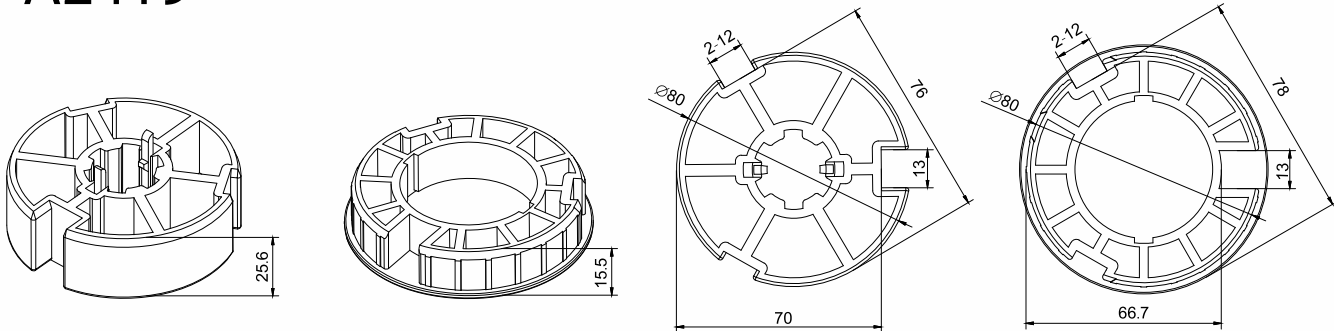
A2410



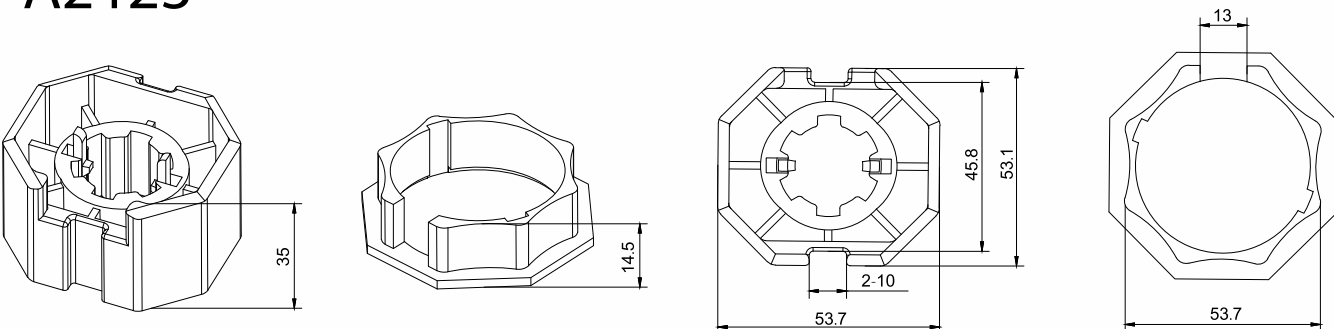
A2415



A2419

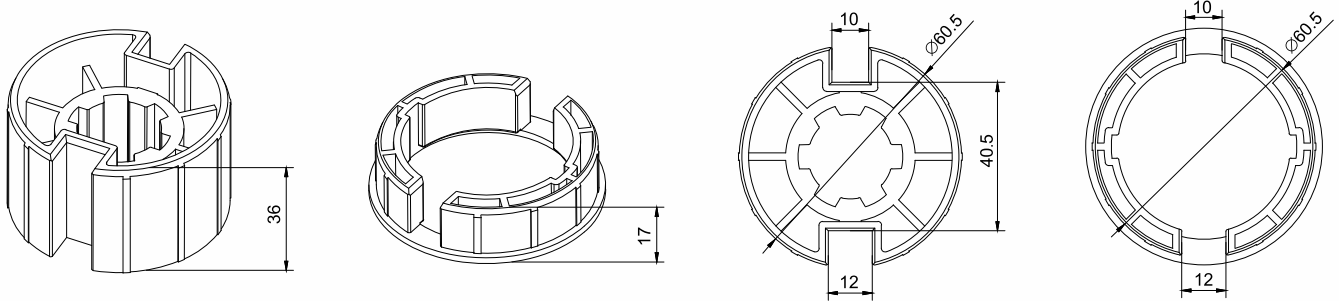


A2423

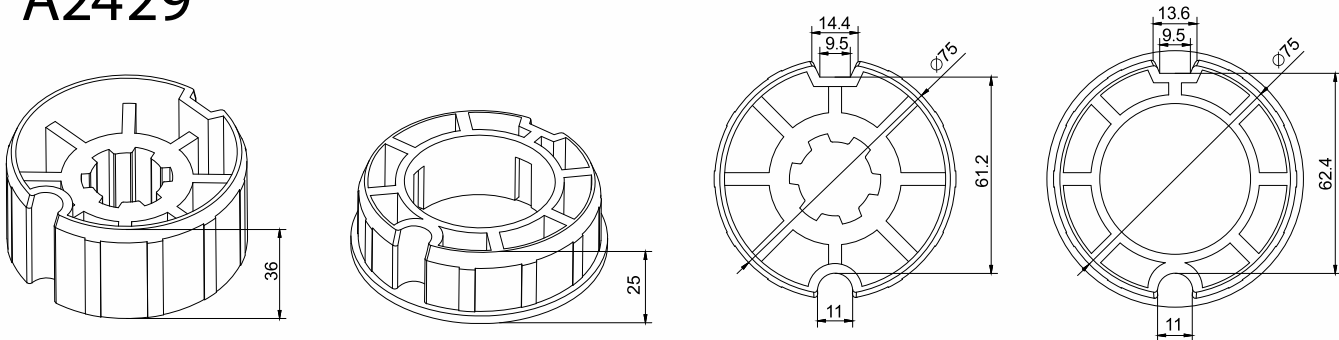


Crown & Drive Adapters

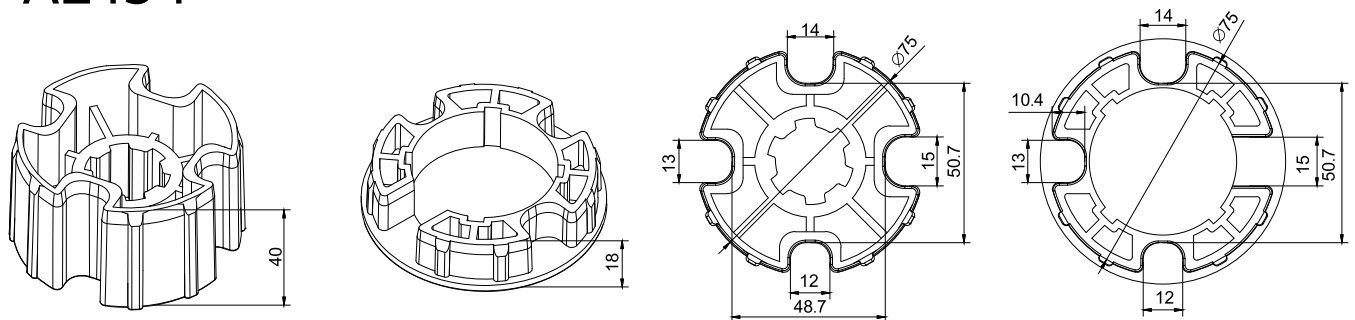
A2424



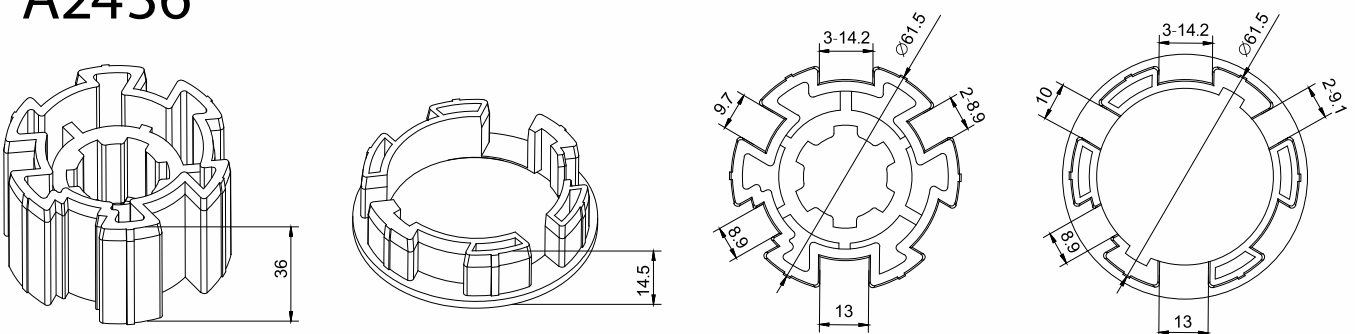
A2429



A2434

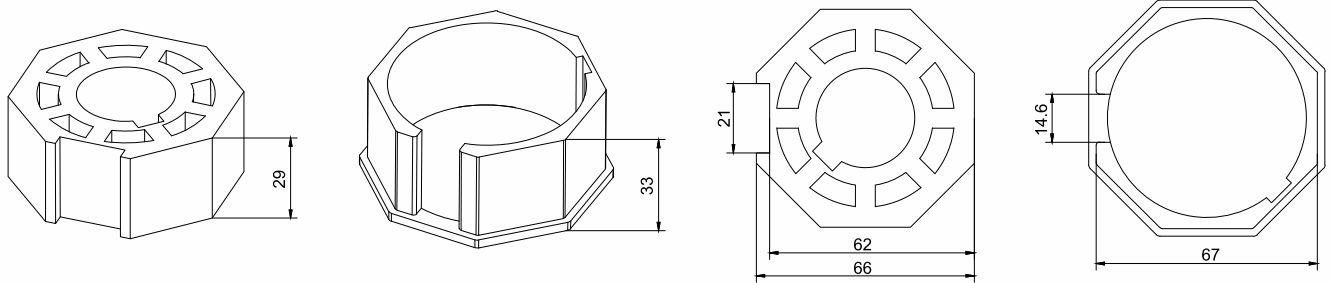


A2436

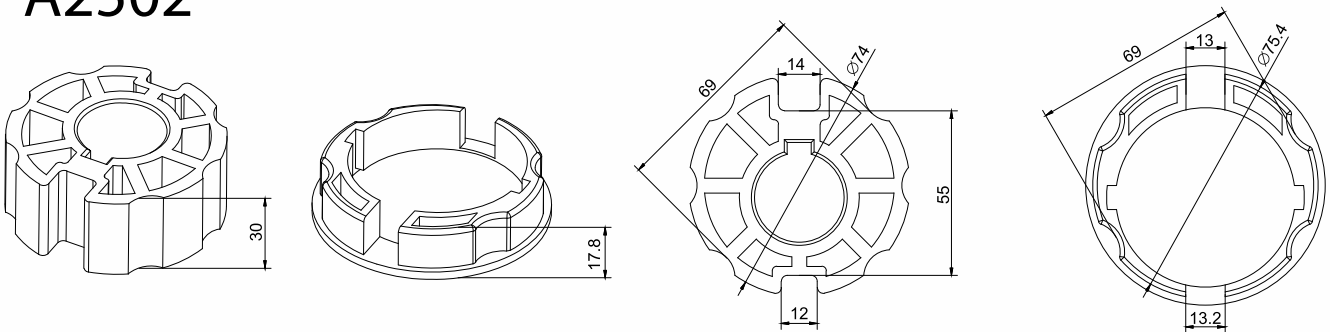


Crown & Drive Adapters

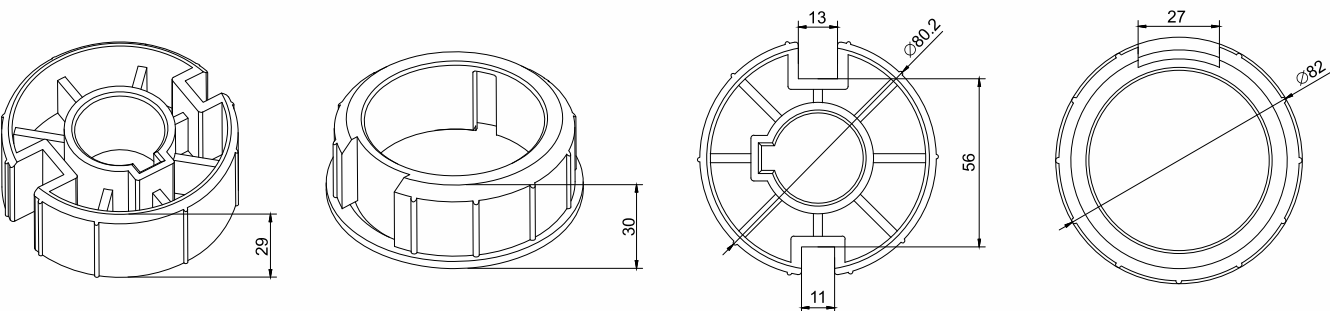
A2501



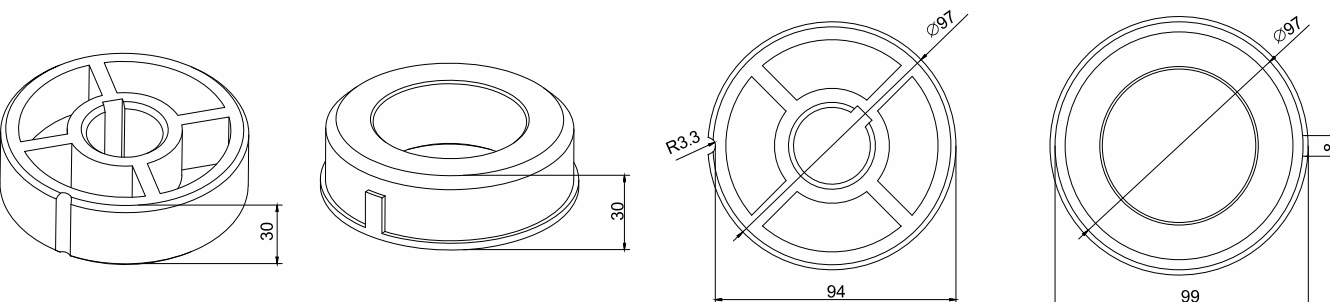
A2502



A2503



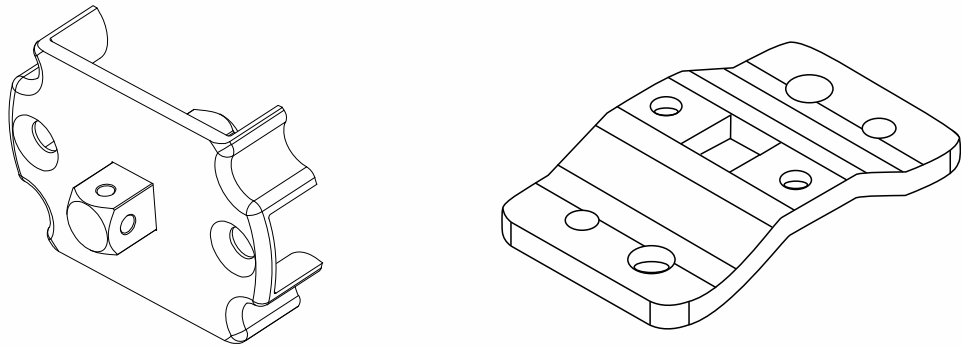
A2505



Brackets

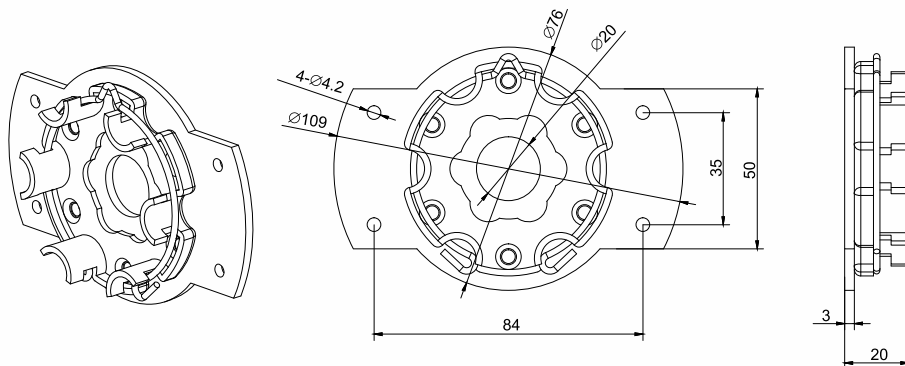
The brackets on this page are for the WSER50 30/17 OD Obstacle Detection motor only.

A3438



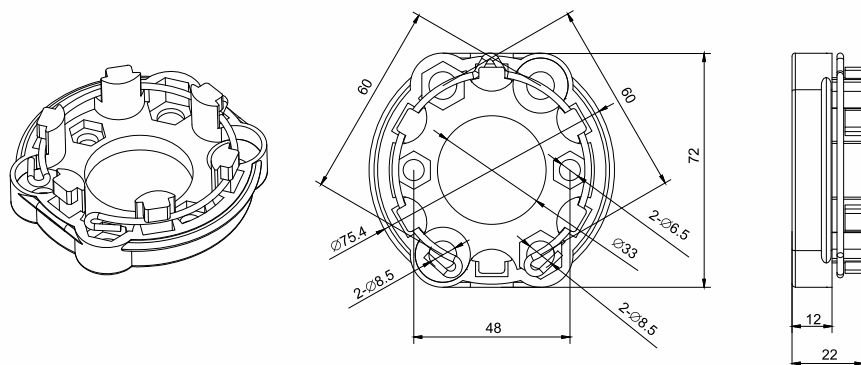
Motor bracket and mounting plate for star head motor only.

A3439



Quick release mounting plate to secure star head motor.

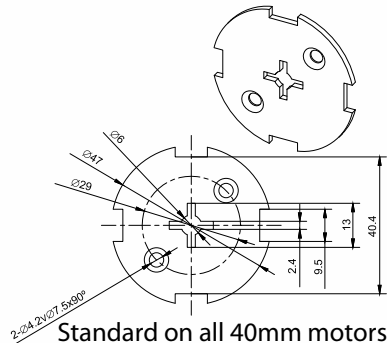
A3440



Quick release mounting plate to secure star head motor.

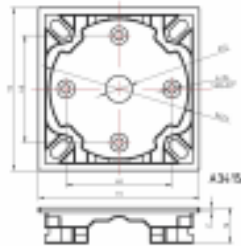
Brackets

A3304



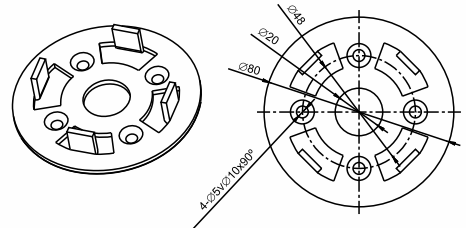
Standard on all 40mm motors

A3415



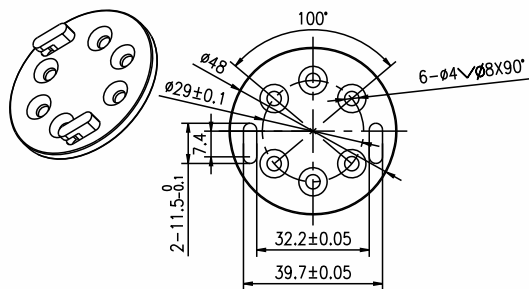
Fast Plug Adapter
locks motor head into place

A3405



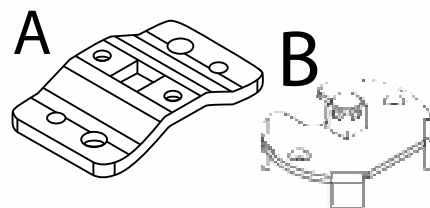
Non lockable bracket for
50mm motors used internally

A3207



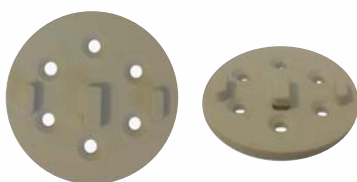
Westral motor plate

A3005



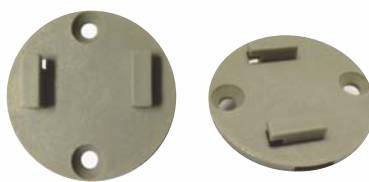
Block and Pin style bracket
Available galvanised or in stainless steel

A3320



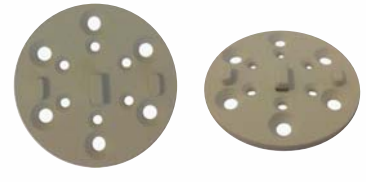
Jai 40mm motor plate

A3310



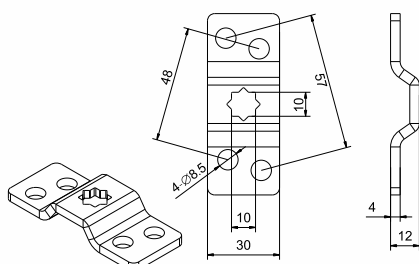
Blindware 40mm motor plate

A3420

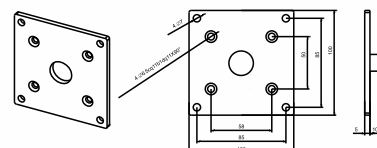


Jai 50mm motor plate

A3006-01



A3501-H



Limit Setting Device & Test Lead



WSB01 Limit Setting Device



Specifications

Limit Setting Device Programming Tool

This device is for setting the limits on WSEC series motors.

All buttons are spring loaded so use as a method of powering other motors temporarily while programming is impractical.



WSB12 Test Lead



Specifications

Test Lead

This item allows you run 4 core WSS series motors in either direction while you set limits.

Alternatively you can use it as a temporary means of powering up 3 core remote control motors while you set limits. Switch is locking so it does not need to be held down.



Cables & Manual Override

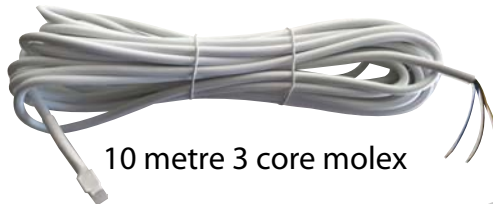
Molex Cables

AM3CM



3 metre 3 core cable

10M3CM



10 metre 3 core molex

AM4CM



3 metre 4 core cable

Solar Panel 3 Metre Extension Lead

Extends the distance between
WSERD50 15/12 and TYB002 solar panel
with battery storage.



Molex Extenders

Extends the distance between
Molex tail and motor.

4 core 20cm extension



4 core 60cm extension



Manual Override Motor Acc.

A3018 Crank Handle

This item is for manual override motors,
and is 1.2m in length

A3018-3 Crank Handle

This item is for manual override motors,
and is 3m in length



A3047

Eyelet

Optional 300mm length
motor comes supplied with
100mm version



Folding Arm Motor Guide

The RED **80+Nm** listings in the 70mm tube section below indicates that this motor is incompatible with a 70mm tube, due to its physical size.

70MM TUBE

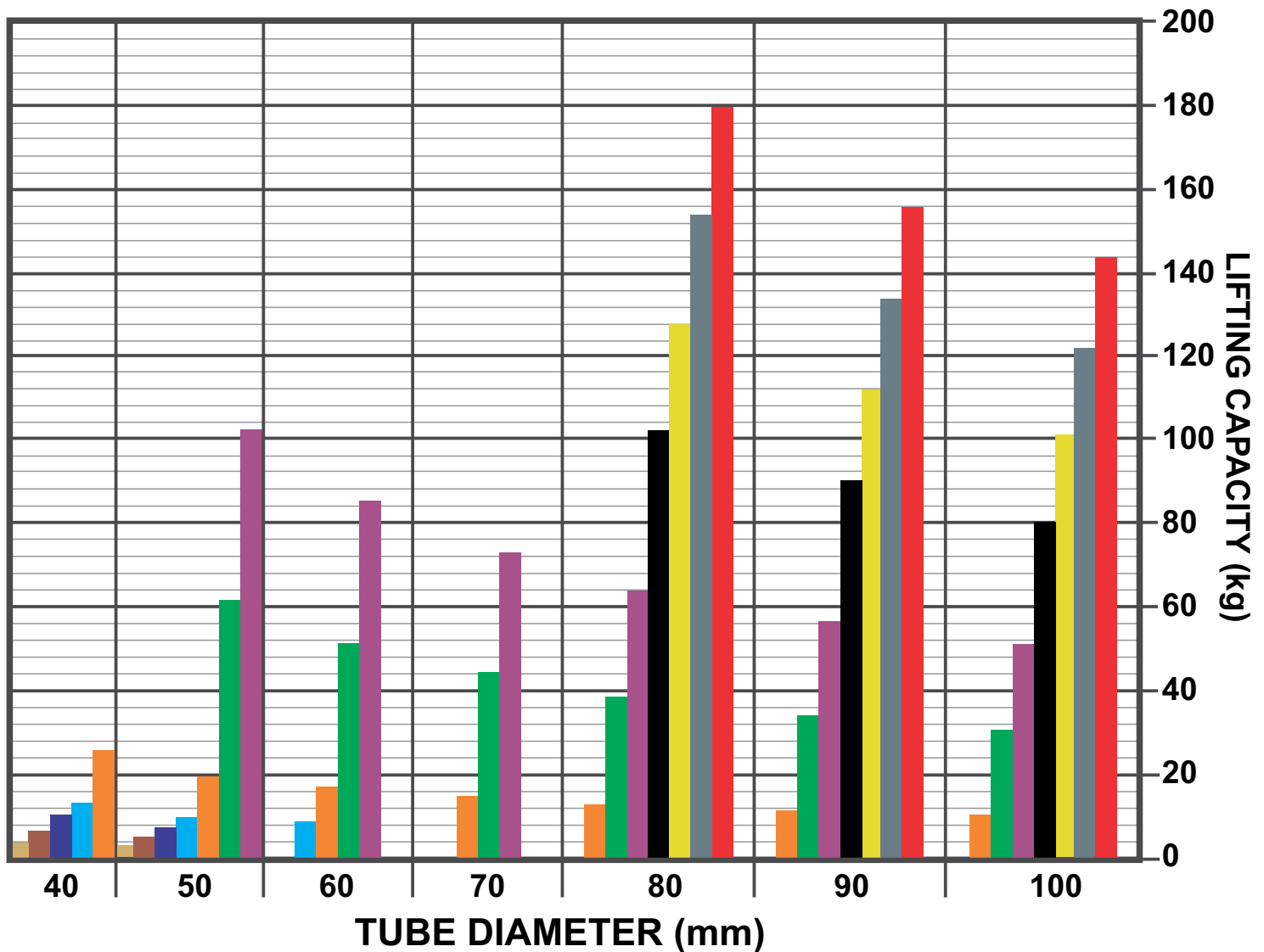
NUMBER OF ARMS	2 ARMS	3 ARMS	4 ARMS
UP TO 1.5M PROJECTION	30Nm	30Nm	50Nm
UP TO 2.0M PROJECTION	30Nm	50Nm	50Nm
UP TO 2.5M PROJECTION	30Nm	50Nm	80+Nm
UP TO 3.0M PROJECTION	50Nm	50Nm	80+Nm
UP TO 3.5M PROJECTION	50Nm	80+Nm	80+Nm
UP TO 4.0M PROJECTION	50Nm	80+Nm	80+Nm

78MM TUBE

NUMBER OF ARMS	2 ARMS	3 ARMS	4 ARMS
UP TO 1.5M PROJECTION	30Nm	50Nm	50Nm
UP TO 2.0M PROJECTION	30Nm	50Nm	80+Nm
UP TO 2.5M PROJECTION	50Nm	50Nm	80+Nm
UP TO 3.0M PROJECTION	50Nm	50Nm	80+Nm
UP TO 3.5M PROJECTION	50Nm	80+Nm	80+Nm
UP TO 4.0M PROJECTION	50Nm	80+Nm	80+Nm

Motor Lifting Chart

FOR ZIPS AND SIDE CHANNEL SYSTEMS



1Nm 2Nm 3Nm 5Nm 10Nm 30Nm
50Nm 80Nm 100Nm 120Nm 140Nm

To use this chart, simply find your tube size at the bottom of the chart, find the colour that matches the capacity of your motor and check against the weights on the right side.

Notes

MOTORISATION MADE EASY

AUSTRALIA / USA / CANADA



Unit 108 12 Pioneer Avenue

Tuggerah Business Park NSW 2259 Australia

Phone: +61 2 4355 4775 Fax: +61 2 4355 4273

sales@alphamotors.com.au www.alphamotors.com.au

alpha

TUBULAR MOTORS PTY LTD



Visit our website



Download our app
(for installers only)

