

1. TECHNICAL SPECIFICATIONS

Protection index: IP20
Up to 15 remotes can be assigned to each motor.

Received frequency: 433.92MHz
Working Temperature: -10°C - 60°C
Charging: 5V/1A Type C

Battery: Lithion-ion
18650-2550mAh 11.1V radio
Charge time: 5-6 hours

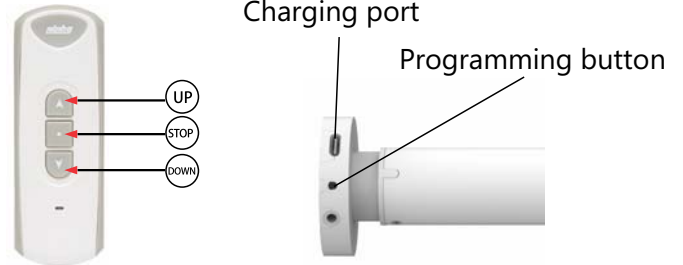
2. CHARGING AND WAKING UP MOTOR



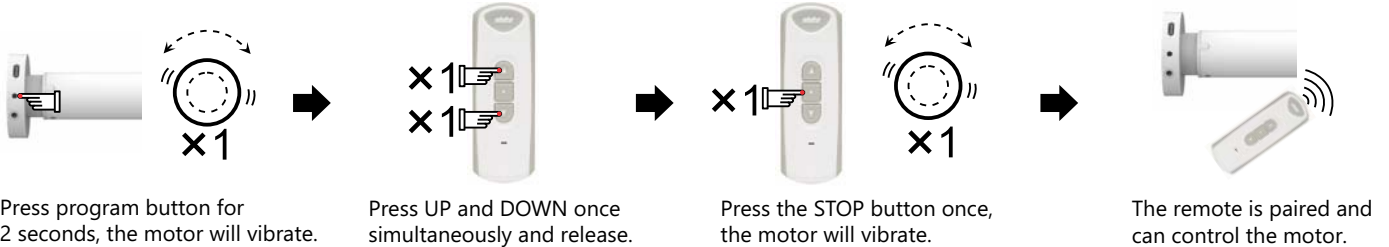
Please charge the motor using the 5V 1A charger before operation. The motor won't function until it has been charged.

Method A Plug 5V 1A charger into charging port for a few seconds till motor vibrates.

Method B Short press program button for 2 seconds, the motor vibrates, then release, the LED will flashes red once and buzzer sounds once.



3. PAIR REMOTE TO MOTOR



4. CHANGING THE RUNNING DIRECTION

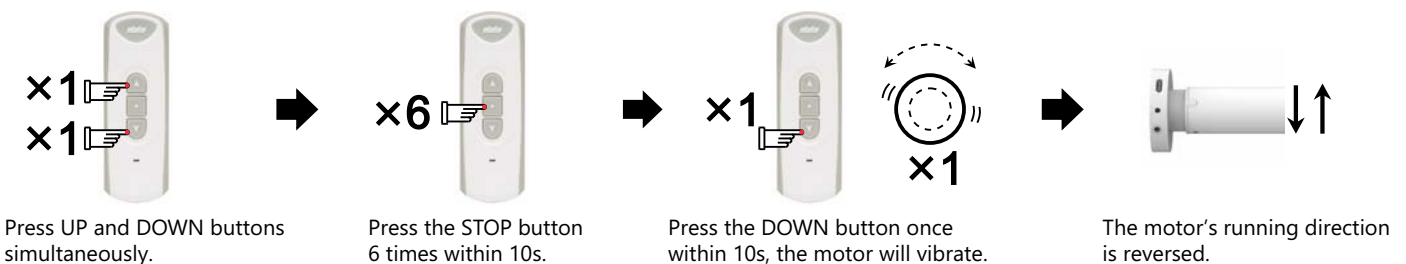
Method A.



Press motorhead's button for about 10 seconds until the motor vibrates 3 times, then release. The LED flashes red 3 times and buzzer sounds 3 times.

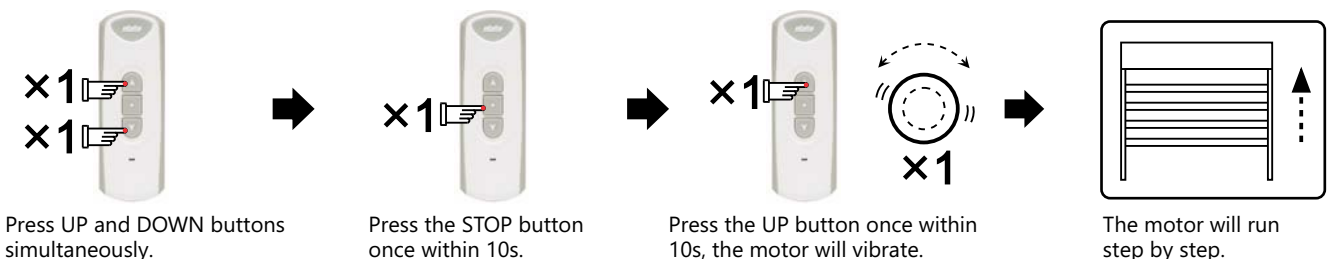
The motor's running direction is reversed.

Method B.

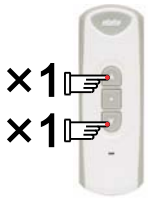


5. TURN ON STEP BY STEP FUNCTION The motor will move in small increments per remotes button press.

Note: If the motor is in step-by-step mode, pressing the UP or DOWN button for 3s will make the motor will run continuously.



6. TURN OFF STEP BY STEP FUNCTION The motor will operate normally.



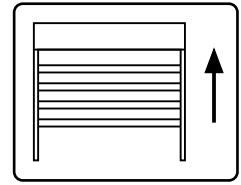
Press UP and DOWN buttons simultaneously.



Press the STOP button once within 10s.

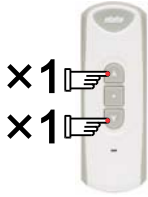


Press the DOWN button once within 10s, the motor will vibrate.



The motor will run continuously.

7. TOP LIMIT SETTING



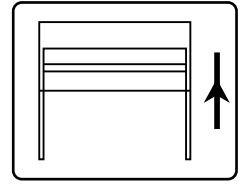
Press UP and DOWN buttons simultaneously.



Press the STOP button twice within 10s.



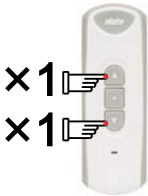
Press the UP button once within 10s, the motor will vibrate.



The TOP limit is set

8. BOTTOM LIMIT SETTING

First, move the blind to the desired position.



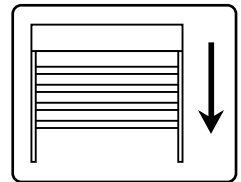
Press UP and DOWN buttons simultaneously.



Press the STOP button twice within 10s.

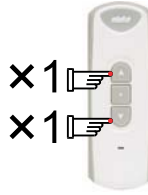


Press the DOWN button once within 10s, the motor will vibrate.



The BOTTOM limit is set

9. TOP LIMIT DELETING



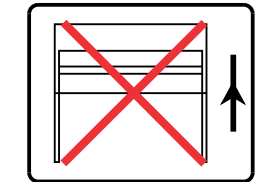
Press UP and DOWN buttons simultaneously.



Press the STOP button 4 times within 10s.

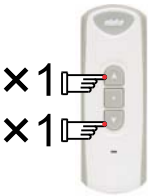


Press the UP button once within 10s, the motor will vibrate.



The top limit is deleted.

10. BOTTOM LIMIT DELETING



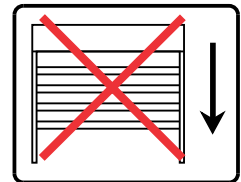
Press UP and DOWN buttons simultaneously.



Press the STOP button 4 times within 10s.



Press the DOWN button once within 10s, the motor will vibrate.



The bottom limit is deleted.

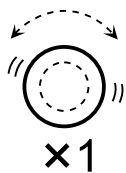
11. THE THIRD LIMIT

First, move the blind to the desired position.

Note: The third limit is also named as the intermediate limit, it is available at any position between up and down limit. The third limit will be deleted automatically if the up or down limit is deleted.



Move the blind to the desired position and press STOP 4 times.

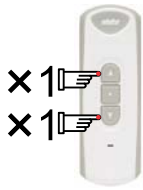


The motor will vibrate; it means the current position is set as the third limit.



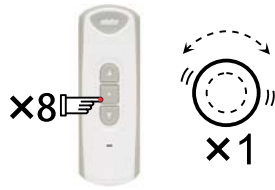
Press the STOP button for 2s, the motor will run to the third limit position from any other current position.

12. ASSIGNING AN ADDITIONAL REMOTE



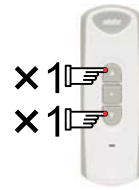
EXISTING

Press UP and DOWN together and release on the existing remote.



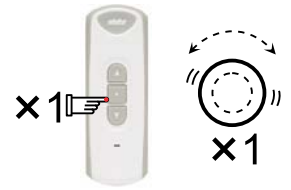
EXISTING

Press STOP 8 times, the motor will vibrate.



NEW

Press UP and DOWN together and release on the new remote.

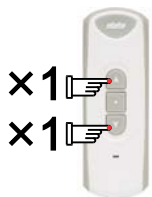


NEW

Press STOP once and the motor will vibrate. The new remote channel will now operate the motor.

13. DELETE REMOTE

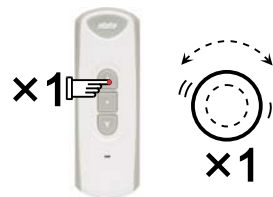
Method A. This deletes the current remote from the motor.



Press UP and DOWN buttons simultaneously.



Press the STOP button 7 times within 10s.

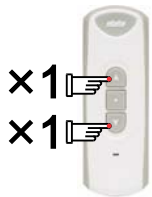


Press the UP button once within 10s, the motor will vibrate.



The current remote and its channels are deleted. Other paired remotes are still working.

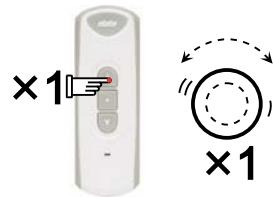
Method B. This deletes all paired remotes and channels.



Press UP and DOWN buttons simultaneously.



Press the STOP button 6 times within 10s.

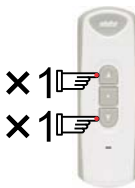


Press the UP button once within 10s, the motor will vibrate.



All remotes and channels are deleted.

14. SPEED ADJUSTMENT BY REMOTE



Press UP and DOWN simultaneously.



Press STOP 5 times within 10 seconds.



Higher speed.



Lower speed.



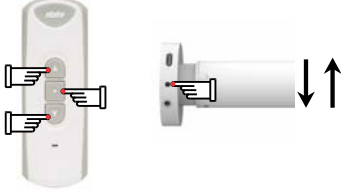
N=1:25rpm
N=2:30rpm
N=3:35rpm

Press UP or DOWN button once to increase or reduce speed. Then the motor will vibrate. The number of vibrations stand for different speeds.

15. THE LIGHT INDICATOR

The light indicator is beneath the program button. It can be green or red in different situations. The indication light will turn red during charging and will turn green once battery is fully charged. It can take 5-6 hours to charge from flat to full.

Low battery light indicator



If battery voltage is low to 9V-10.7V the buzzer will sound 8 times and the indicator light will flash 8 times during the motor's operation.

If battery voltage is lower than 9V, the motor won't work until it is higher than 9.5V.

16. SLEEP MODE (motor is in sleep mode by default)

Short press program button for 2 seconds and release, the LED light flashes red once and buzzer sounds once. The motor vibrates (or charge the motor for a few seconds till it does vibrate). Both methods will wake the motor.

To set motor in sleep mode, keep pressing program button for 20 seconds until motor vibrates 5 times, then release. The LED flashes red 5 times and buzzer sounds 5 times. Or, when the motor is in pairing mode, keep pressing program button for 3 seconds, motor will vibrate 5 times, LED flashes red 5 times and the buzzer sounds 5 times. Both methods will set the motor to sleep mode.

Press and hold program button for 16 seconds until the motor vibrates 4 times, then release. The LED flashes red 4 times and buzzer sounds 4 times, all settings will be deleted. Then you can reset the motor.

Safety

To ensure your safety and the continued safe operation of our products, we urge you to adhere to the following guidelines with regards to Lithium-Ion batteries:

1. ****Avoid Overcharging**** Overcharging the batteries can lead to overheating and, in extreme cases, fire. Once the motor's green light indicates a full charge, immediately disconnect it from the charging circuit to prevent overcharging.
2. ****Prevent Overheating**** Excessive heat can also pose a risk to the batteries. Please ensure that the motor is not exposed to prolonged periods of high temperature or direct sunlight, as this can lead to overheating and potential fire hazard.
3. ****Immediate Action**** In the event of any unusual warmth, discolouration, or odour emanating from the motor, immediately disconnect it from the power source and refrain from further use.

PLEASE NOTE:

- To keep product in good condition, please charge the motor every 6 months.
- Please do not let children play with the remote or motor.
- Storage temperature: -20°C to 65°C

16. SET UP MATTER ON APPLE HOME POD

This instruction takes Apple Home Pod Mini as an example.

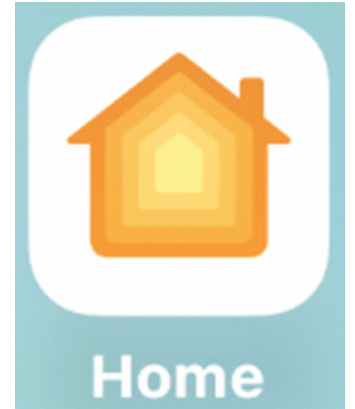
Note: Make sure the motor is charged before using. The motor LED light will turn green if it is fully charged.

If battery voltage is under 9V, the motor won't work. You need to charge the motor immediately. If battery voltage is between 9V and 10.7V, the motor can work, it will beep 8 times, and LED light will flash red 8 times to remind you of low battery.

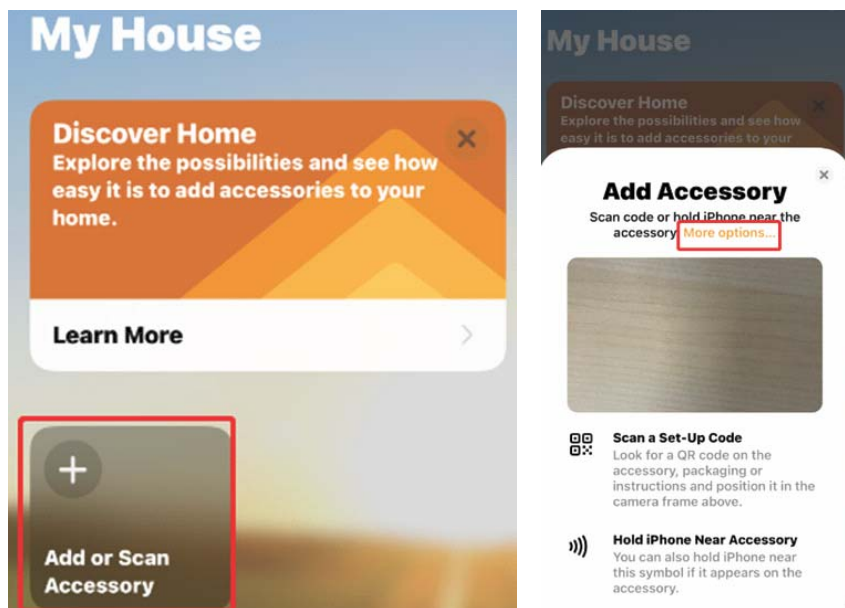
Connect Apple Home Pod Mini with your iPhone.

Required devices:

- An iPhone connected to WIFI 2.4G (it won't work if it is 5G), and downloaded Apple Home, enable Bluetooth.
- An Apple Home Pod Mini.
- A remote which is paired to the motor and set motor's Top and Bottom limit (refer to above mentioned instruction).

**Steps**

1. Enable iPhone's Bluetooth. Power on the Home Pod Mini. Hold your phone close to Home Pod Mini.
2. Click App Home in your iPhone, click "Add or Scan Accessory", select "more options" the motor will search Home Pod Mini automatically and pop up on iPhone's screen.
3. Click "setting" to complete settings for the Home Pod Mini step by step.

**Connect the motor with Home Pod Mini**

1. Short press motor head button four times, motor's LED light will flash red.
2. Click iPhone's app <Home>, click "Add or Scan Accessory" in the right upper corner, scan the QR code pasted on the motor head to add the motor.
3. Complete motor's setting as followed steps.

Then you can control the motor from App < Home>. The motor can also be voice controlled.

Note:

1. The Home Pod Mini used as a hub. It must be connected to your iPhone in the first place.
2. The motor's Top and Bottom limits must be set by remote first, otherwise, the app Home cannot drive motor to run.

17. SET UP MATTER ON IPHONE

Before you begin ...

Update the iPhone or iPad to the latest software. If using and apple speaker update the speaker software as well.

To begin the pairing process, make sure the motor is charged. Once power is on, you can follow the steps below:

- Make sure you have the latest updates on your phone.
- Launch the **Home app**.
- Press the button on the motor head **4 times** to enter pairing mode.
- Tap the + button near the top right-hand corner of your screen.
- Tap **Add Accessory**.
- Use your camera to scan the Matter QR code.
- We would suggest taking a photo of the QR code and sending to your customer for safe keeping or giving the boxes to the customer and naming each box to the corresponding window/motor.
- Tap **Add to Home**.
- Tap a room to assign your device to.
- Tap **Continue**.
- Tap the device name and customize according to your needs.
- Tap **Continue**.
- Tap **Done** to complete the pairing process.

Remove from individual connected services

- On the Matter Accessories screen, tap an accessory.
- Tap Edit.
- Tap the Delete button next to the accessory you want to remove.
- Swipe or tap Remove to confirm that you want to remove the accessory.
- Tap Remove From (Connected Service) to confirm the removal.

Remove from all connected services

- On the Matter Accessories screen, tap Edit.
- Tap the Delete button next to the accessory you want to remove.
- Swipe or tap Remove to confirm that you want to remove the accessory.

18. SET UP MATTER ON GOOGLE

- Update phone and Google Home app to latest versions.
- Make sure Google speakers are linked to home network and powered on.
- Open **Google Home app**.
- At bottom of Google Home app, **select Devices**.
- In Device tab, **press the +** in the bottom right-hand corner.
- Press the button on the motor head **4 times** to enter pairing mode.
- Select **matter-enabled** device.
- Scan the **QR code** on the motor or the box.

(Take a photo of the QR code and send to your customer for safe keeping, or give the boxes to the customer and name each box to the corresponding window/motor).

- Google Home will start to connect to the motor.
- Uncertified Device – press **set up anyway**.
- Motor is now connected to Google Home and Google devices - click done.
- Where is this device. Select a room and click next.
- Name device and click next.
- Now you can control motors opening position and see percentage of battery in Google Home.
- You can now use Google voice commands to open a motor to a certain percentage.
- “Hey, Google, open bedroom window 1 to 33 percent”.

