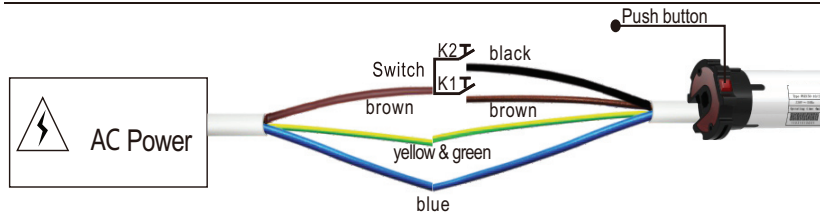


WSEC Universal Motors

1 Technique Specifications

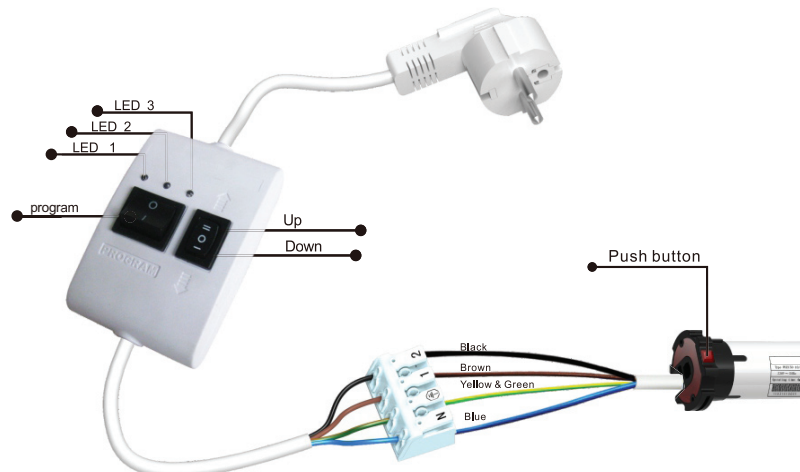
- Power: AC230V/50Hz(AC110V/60Hz)
- Rated Load: ≤400W
- The up/down limit can easily be set through the external limit setting device WSB11 or push button on motor's head.
- This motor can be connected with the external manual switch. It can also work with remote control system, which is equivalent to the use of standard type motor. When the motor works with remote control system, the wire connection is shown in the specification of adaptive remote control system.
- Description and specifications given in this introduction are subject to modification without notice. If there is any change on the appearance and color , please refer to real objects finally.

2 Wire Connection



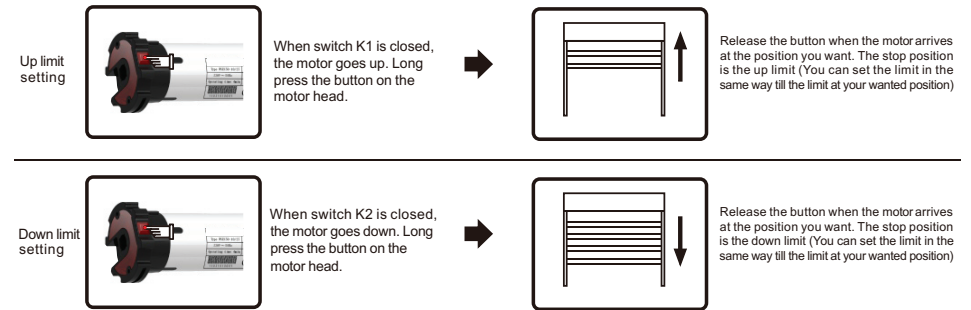
Note: The brown wire and black wire of the motor should be connected to the brown wire from power supply through the switch K1 and K2. The blue wire should be connected to the blue wire from power supply. The ground wire should be connected to the ground wire from power supply. When the switch K1 is closed, motor goes up. When the switch K1 is cut, motor stops. When the switch K2 is closed, motor goes down. When the switch K2 is cut, motor stops. The limits can be set easily through the external limit setting device WSB11 or push button.

2 WSB11 Wire Connection

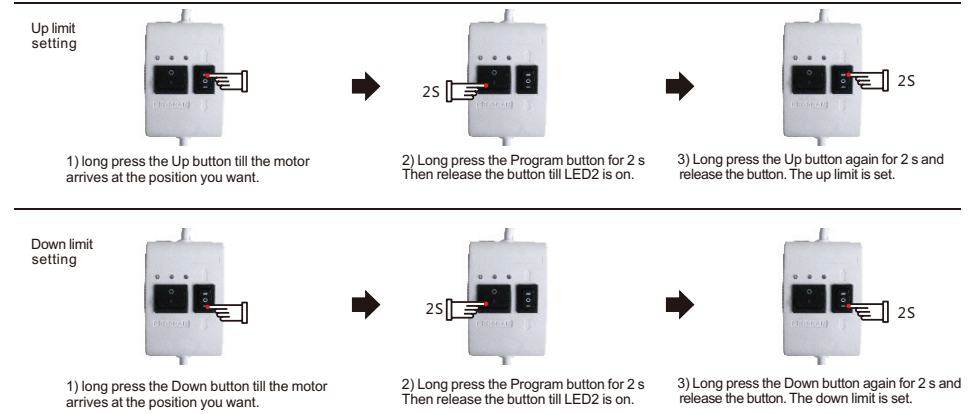


Notes: When UP/Down/Program button is pressed, light LED1 is on. When Program button is pressed for 2s, light LED2 is on. When Program button is pressed for 10s, light LED2 is off and LED3 is on.

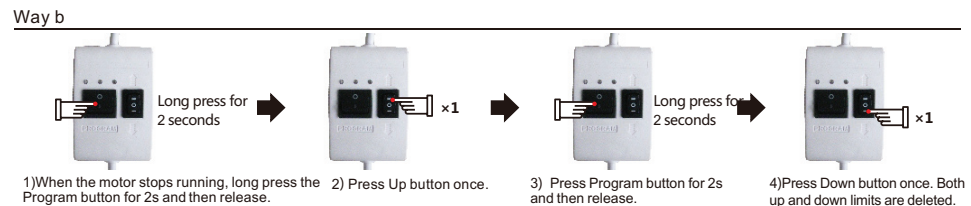
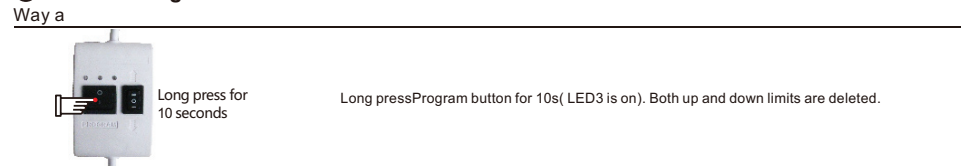
4 Limit Setting through Push Button



5 Limit Setting through WSB11



6 Limit Deleting



Note: The button press should be about 2s with 5s interval. During the set-up , there might be interference from other signals which leads to the failure. Please reset up.