

RC 008 Instruction

① Technique Specifications

Receiver :

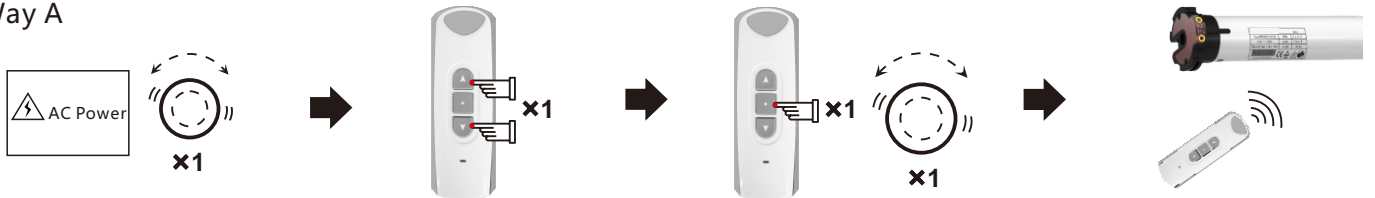
- Power: AC 220V / 50Hz(AC110V/60Hz) ➤ The receiver can be compatible with 15 emitters at most
- Rated load: do not exceed 400W ➤ The receiver will cut off electricity after working 4 minutes continuously

② Wires Connect



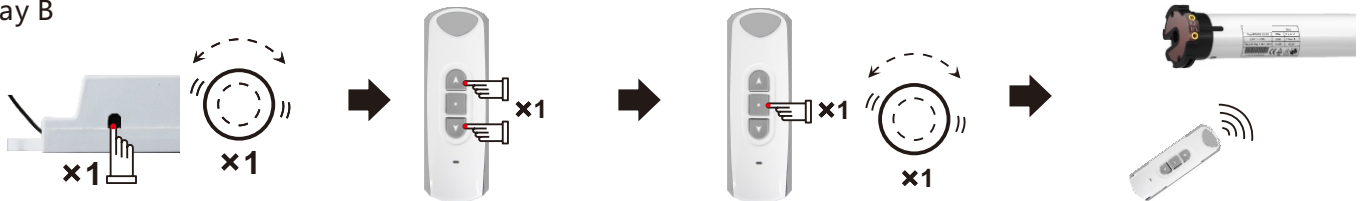
③ Code Learning

Way A



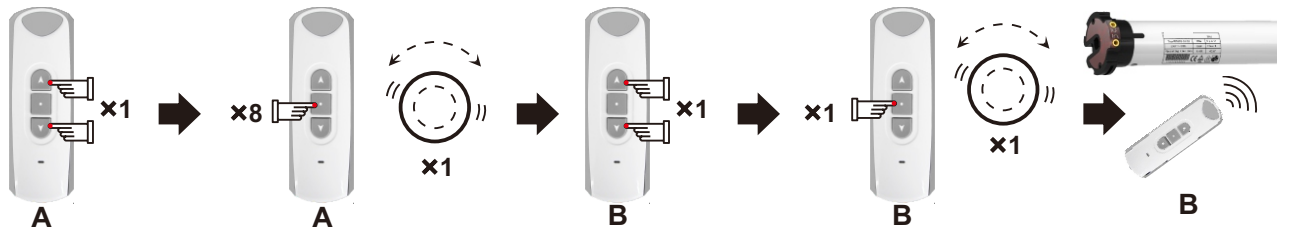
- 1) Power on, the motor will vibrate.
- 2) Press UP and DOWN buttons simultaneously.
- 3) Press emitter's STOP button once within 10S, the motor will vibrate.
- 4) You can control the motor by the emitter.

Way B



- 1) Switch on the power, press receiver's learning button, the motor vibrates once.
- 2) Press UP and DOWN buttons simultaneously.
- 3) Press emitter's STOP button once within 10S, the motor will vibrate.
- 4) You can control the motor by the emitter.

Way C

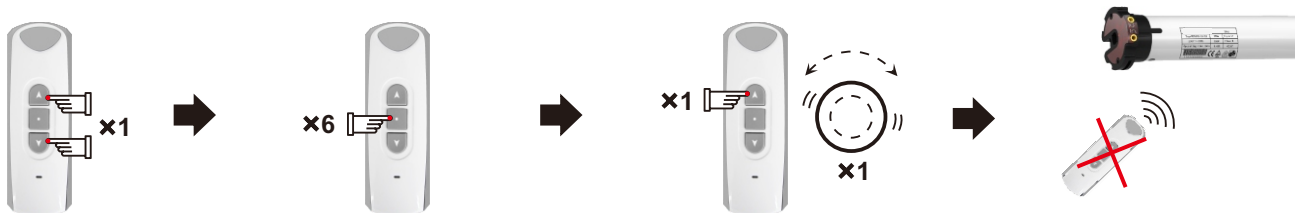


- 1) Press UP and DOWN buttons simultaneously.
- 2) Press emitter's STOP button eight times within 10S, the motor will vibrate.
- 3) Press UP and DOWN buttons simultaneously.
- 4) Press emitter's STOP button once within 10S, the motor will vibrate.
- 5) You can control the motor by B emitter.

⑤ Code Deleting

(1) Delet all emitters

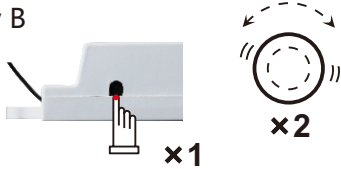
Way A



- 1) Press UP and DOWN buttons simultaneously.
- 2) Press emitter's STOP button six times within 10S, the motor will vibrate.
- 3) Press UP and DOWN buttons simultaneously.
- 4) All the emitters that have already learned the motor's code won't control the motor any more.

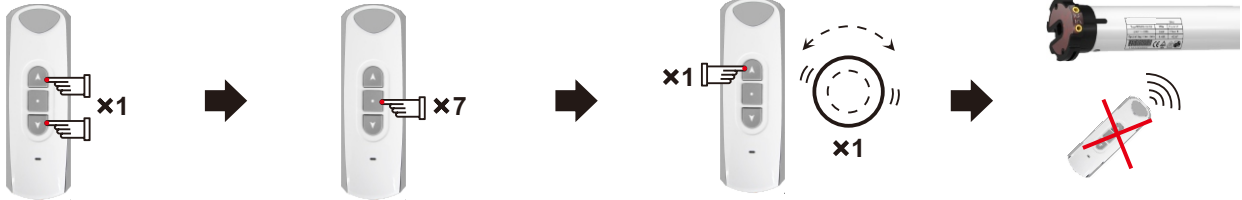
RC 008 Instruction

Way B



Press receiver's learning button for 3 seconds, the motor vibrates. No emitter can control this motor.

(2) Delete the emitter you are operating



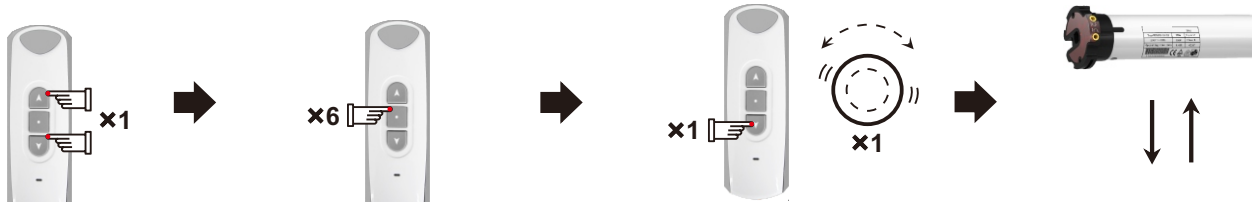
1) Press emitter's Up and Down button once simultaneously.

2) Press emitter's Stop button seven times.

3) Press emitter's Up button, the motor vibrates once.

4) This emitter you are operating now won't control the motor again.

(5) Direction Change



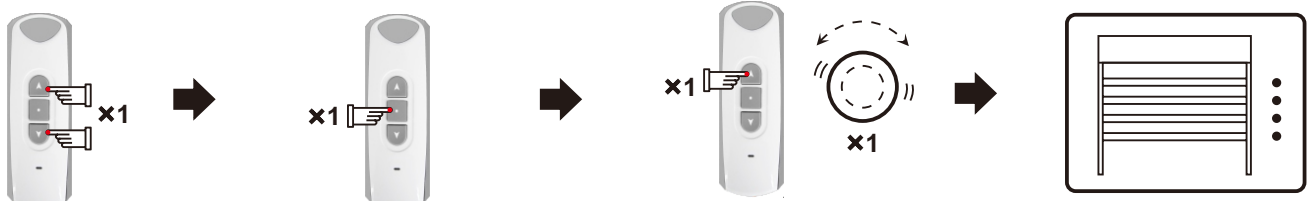
1) Press emitter's Up and Down button once.

2) Press emitter's Stop button six times.

3) Press emitter's Down button once, the motor vibrates.

4) The motor's running direction is changed.

(6) Set Step by Step Function



1) Press emitter's Up and Down button once.

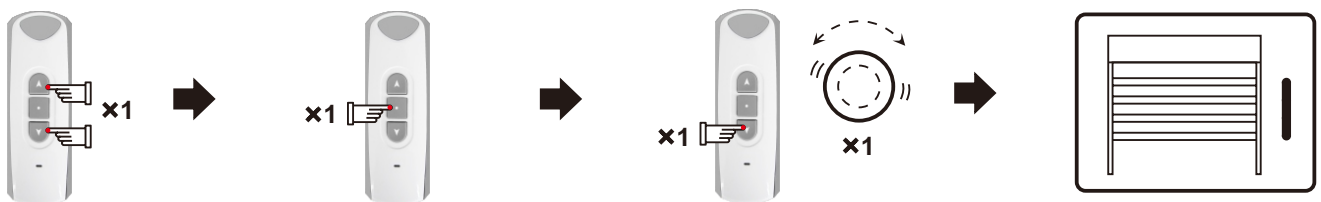
2) Press emitter's Stop button once.

3) Press emitter's Up button once, the motor vibrates once.

4) The motor will run step by step.

If the motor is in vibration state, press emitter's Up or Down button for 3 seconds, the motor will run continuously. Press the Stop button, the motor will change into vibration state.

(7) Delete Step by Step Function



1) Press emitter's Up and Down button once.

2) Press emitter's Stop button once.

3) Press emitter's Down button once, the motor vibrates once.

4) The motor will run continuously.

! Announcement

- The setting may fail due to other signal interference. In this case, please reset.
- The emitter RE101 is taken as an example in this instruction. The receiver is compatible with several other fixed code emitters.
- If emitter's battery is in low power, please replace it.
- The receiver is of high voltage, please do not place it in humid atmosphere.
- Children should be supervised to ensure that they do not play with the appliance.
- Working temperature: $-10^{\circ}\text{C} \sim +55^{\circ}\text{C}$.
- All products are as per real subjects. There will be no prior notification if any change in appearance, color, functions etc.