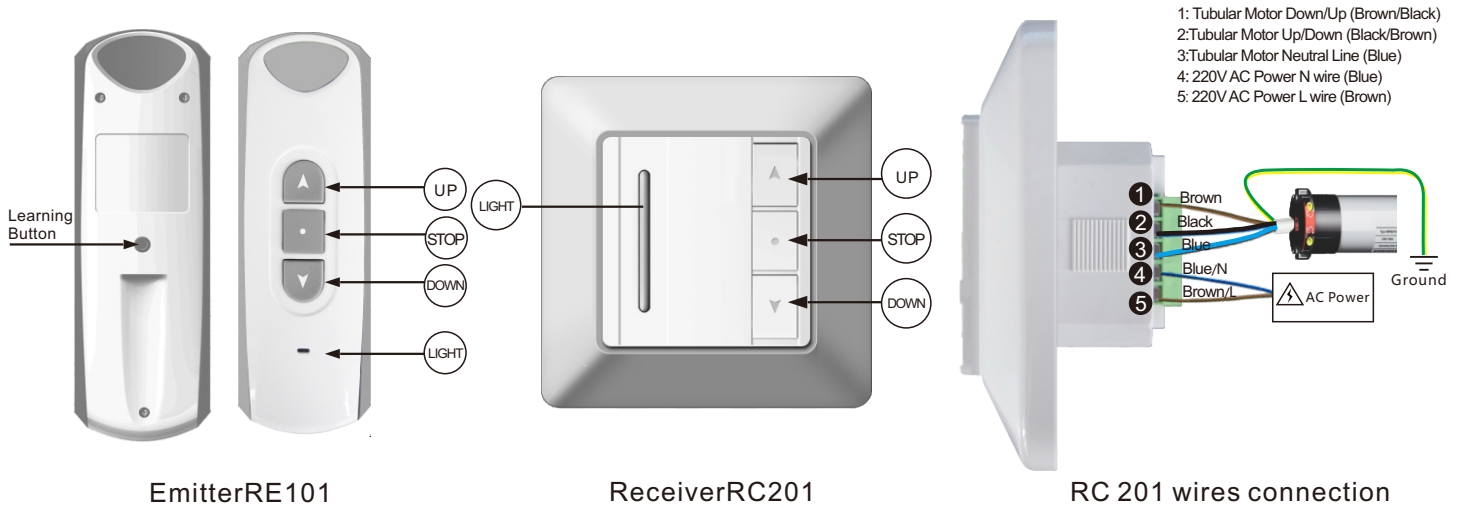


RC 201 Instruction

① Technique Specifications

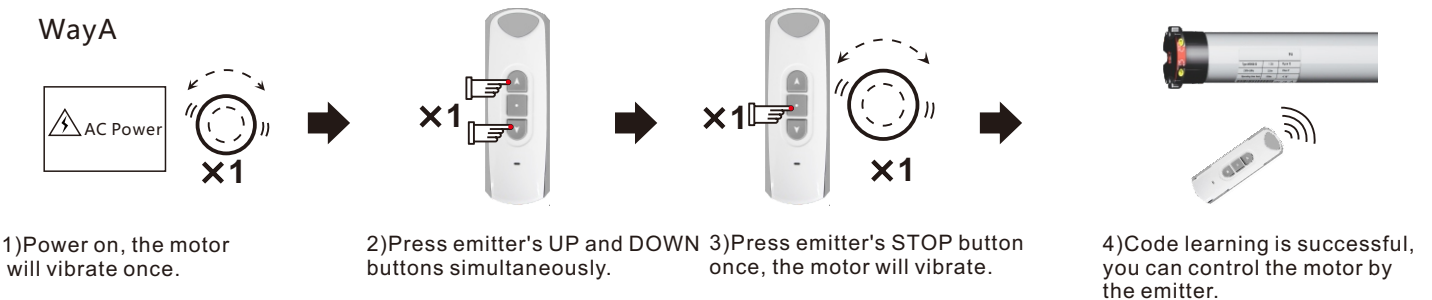
- Power : AC220V(110V)/50Hz(60Hz) ➤ Rated : ≤400W
- The receiver will cut the power after working for 4mins continuously
- The receiver can be controlled by 15 emitters at most
- The receiver 's UP、STOP、DOWN buttons can also control the motor

② Product Appearance



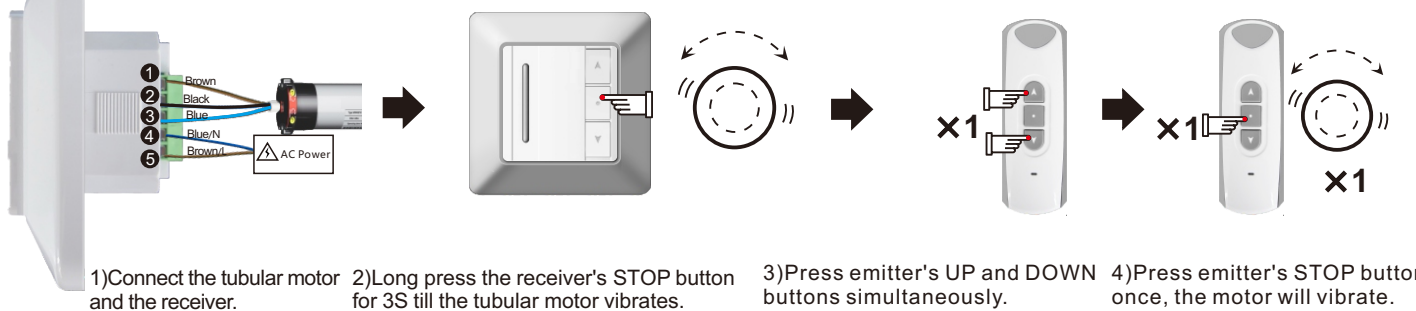
③ Code Learning

Way A



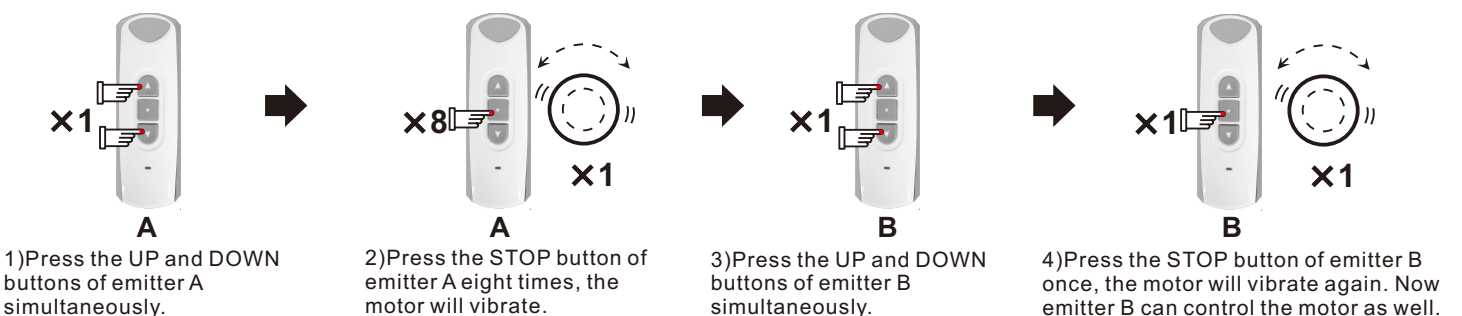
- 1) Power on, the motor will vibrate once.
- 2) Press emitter's UP and DOWN buttons simultaneously.
- 3) Press emitter's STOP button once, the motor will vibrate.
- 4) Code learning is successful, you can control the motor by the emitter.

Way B



- 1) Connect the tubular motor and the receiver.
- 2) Long press the receiver's STOP button for 3S till the tubular motor vibrates.
- 3) Press emitter's UP and DOWN buttons simultaneously.
- 4) Press emitter's STOP button once, the motor will vibrate.

④ Copy Note: Emitter B can control the tubular motor after it learns code from emitter A.

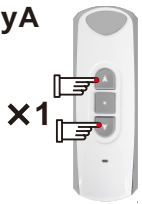


- 1) Press the UP and DOWN buttons of emitter A simultaneously.
- 2) Press the STOP button of emitter A eight times, the motor will vibrate.
- 3) Press the UP and DOWN buttons of emitter B simultaneously.
- 4) Press the STOP button of emitter B once, the motor will vibrate again. Now emitter B can control the motor as well.

RC 201 Instruction

5 Code Deleting

WayA

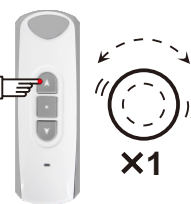


1) Press emitter's UP and DOWN buttons simultaneously.

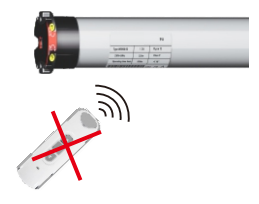


2) Press emitter's STOP button six times.

x1



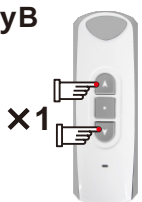
3) Press emitter's UP button once, the motor vibrates once.



4) All the emitters that have already learned the motor's code won't control the motor any more.

Note: All the emitter will not control this motor, unless you cut off the power and do code learning again.

WayB

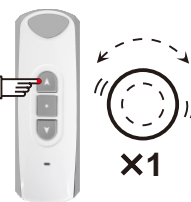


1) Press emitter's UP and DOWN buttons simultaneously.



2) Press emitter's STOP button seven times.

x1

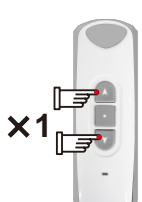


3) Press emitter's UP button once, the motor vibrates once.



4) This emitter you are operating now won't control the motor any more.

6 Direction Change

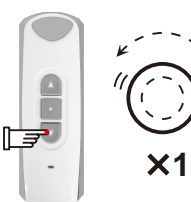


1) Press emitter's UP and DOWN buttons simultaneously.

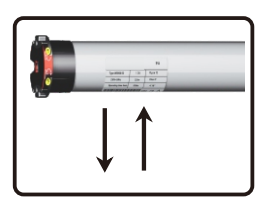


2) Press emitter's STOP button six times.

x1

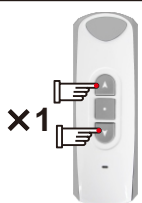


3) Press emitter's DOWN button once, the motor vibrates once.



4) The motor's running direction is changed.

7 Set Step by Step Function

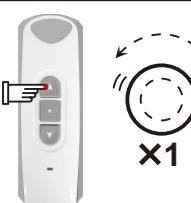


1) Press emitter's UP and DOWN buttons simultaneously.

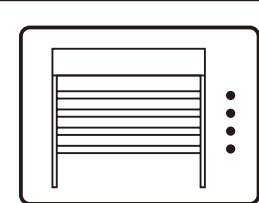


2) Press emitter's STOP button once.

x1

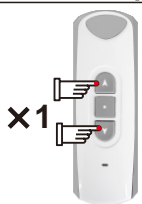


3) Press emitter's UP button once, the motor vibrates once.



4) The motor will run step by step.

8 Delete Step by Step Function

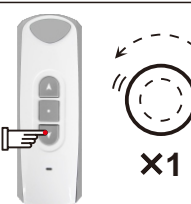


1) Press emitter's UP and DOWN buttons simultaneously.

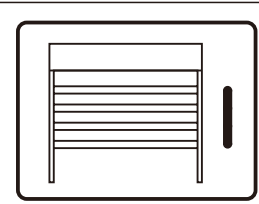


2) Press emitter's STOP button once.

x1



3) Press emitter's DOWN button once, the motor vibrates once.



4) The motor will run continuously.

! Announcement

- Setting may fail due to the interference of signal. If in this case, please reset.
- The emitter RE101 is taken as an example in this instruction. The receiver is compatible with several other rolling code emitters.
- Please do not press buttons for too long in case life span of battery declines. Pressing time should be at 0.5S, interval time should be 1 second. If the battery is in low power, please replace battery.
- The control unit is of high voltage. Please do not place it in humid atmosphere.
- Children should be supervised to ensure that they do not play with the appliance.
- Ambient temperature: -10°C~+55°C.
- All products are as per material subjects if there is change in appearance, color, function etc. The information is subject to changes without prior notice.